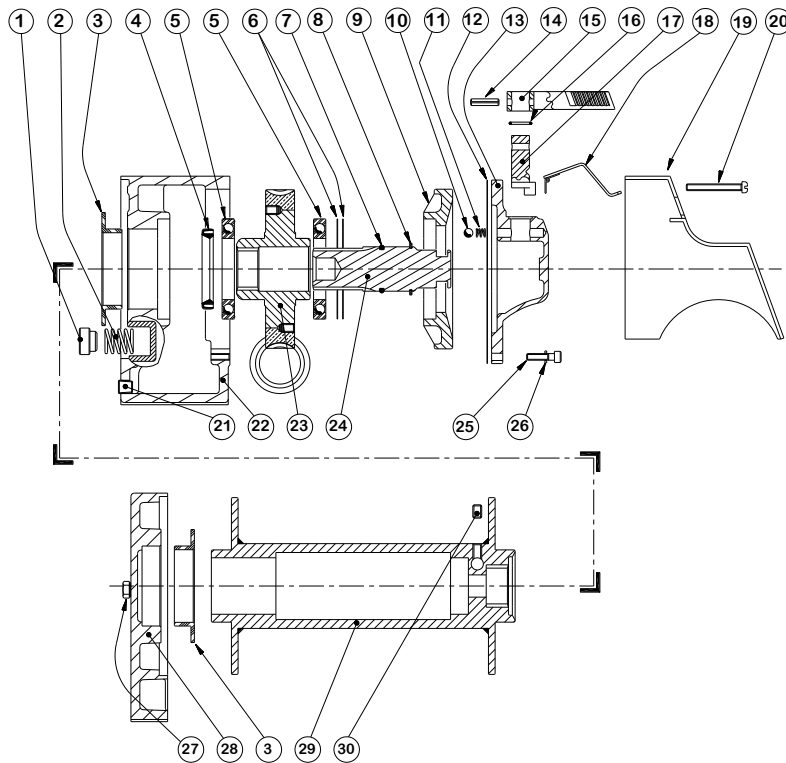


HUSKY ELECTRIC WINCHES, GENERAL ASSEMBLY



| ITEM: | DESCRIPTION: | PART No: | QTY: |
|--------------|--------------------------|-----------------|-------------|
| 1 | Brake Shoe | 317 | 2 |
| 2 | Brake Spring | 320 | 2 |
| 3 | Flanged Bearing | 7658 | 2 |
| 4 | Oil Seal | 4-22-5572103 | 1 |
| 5 | Ball Bearing | 4-13-55090113 | 2 |
| 6 | Shim, 0.07mm | 4-01-8090073 | A/r |
| 6 | Shim, 0.12mm | 4-01-8090123 | A/r |
| 7 | 'O' Ring | 4-21-7813 | 1 |
| 8 | Circlip | 4-24-4053183 | 1 |
| 9 | Bearing Carrier | 7654 | 1 |
| 10 | Steel Ball | 4-54-79324 | 1 |
| 11 | Spring | 4-31-7629510223 | 1 |
| 12 | Gasket | 7688 | 1 |
| 13 | Clutch Housing | 7652 | 1 |
| 14 | Roll Pin | 4-56-602603 | 1 |
| 15 | Operating Lever | 7673 | 1 |
| 16 | 'O' Ring | 4-21-6423 | 1 |
| 17 | Clutch Shaft | 7676 | 1 |
| 18 | Safety Flap Assembly | 10161 | 1 |
| 19 | Motor Cover | 10166 | 1 |
| 20 | Set Screw, M6 X 50mm | 4-71-0605023 | 2 |
| 21 | Pressure Plug | 4-29-224 | 2 |
| 22 | Wormbox | 7643 | 1 |
| 23 | Wormwheel / Worm set | 85-95019 | 1 |
| 24 | Clutch Member | 7659 | 1 |
| 25 | Cap Hd Screw, M6 X 25mm | 4-36-0602522 | 8 |
| 26 | Spring Washer, M6 | 4-51-0623 | 16 |
| 27 | Set Screw, M8 X 16mm | 4-32-0801622 | 8 |
| 28 | Support Housing. | 7645 | 1 |
| 29 | Rope Drum Assembly | 85-90005 | 1 |
| 30 | Skt Set Screw, M8 x 12mm | 4-40-081203 | 1 |