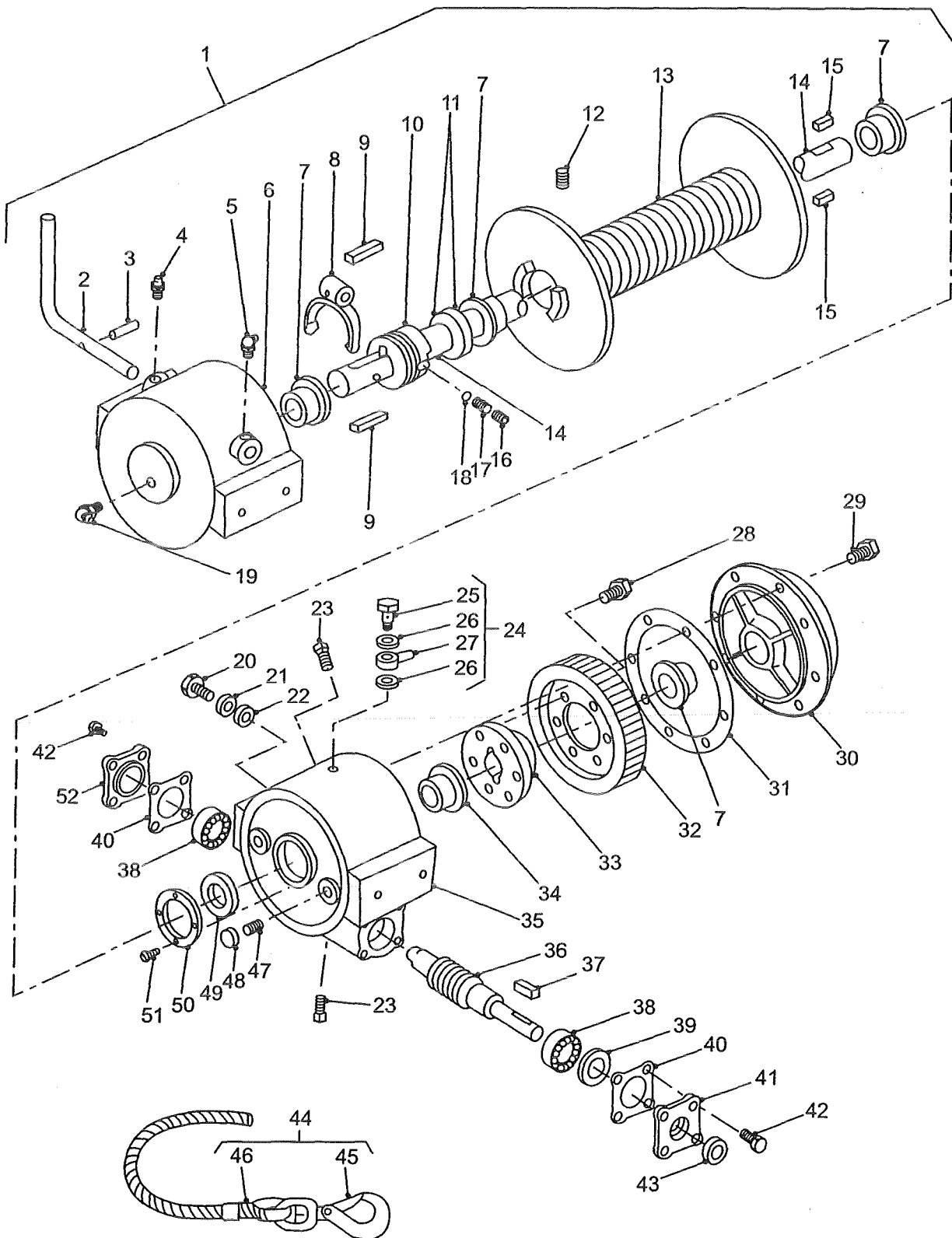


WINCH ASSEMBLY

GROUP UA
 TITLE WINCH ASSEMBLY

ITEM NO	DESIGNATION	NSN MANUFACTURER CODE/PART NO SUPPLIER CODE/PART NO	NO OFF	U O	E X	L+ M* H*
001	WINCH, DRUM, VEHICLE MOUNTING THOMAS T9000M LESS CABLE, HEAVY DUTY, 45:1 RATIO (INCLUDES UA 002 TO UA 019, UA 023 TO UA 043 AND UA 047 TO UA 052)	2590 66-128-6443 Z4820/T9000M Z5394/AYG8185	1	EA	A	MH
002	HANDLE, 90 DEG. BEND, 160 MM BY 160 MM, 19 MM DIA MILD STEEL	Z4820/T55 Z5394/HYL8725	1			
003	PIN, SPRING, 1.25 IN LG BY 0.25 IN OD	5315 66-128-5101 Z4820/T57 Z5394/HYL8726	1	EA	X	LMH
004	FITTING, LUBRICATION STRAIGHT, 3/8 IN UNC THD	4730 66-128-5069 Z0913/T218 Z5394/HYL8788	1	EA	X	LMH
005	FITTING, LUBRICATION STEEL, 45 DEG ANGLE	4730 66-128-5829 Z4820/T2656 Z5394/HYL8885	1	EA	X	LMH
006	HOUSING, CLUTCH ASSEMBLY, WINCH, CAST ALUMINIUM	Z4820/T2654 Z5394/HYL8883	1			
007	BUSH, HEADED, SINTERED BRONZE, 1-1/2 IN ID, 1-3/4 IN OD, 1-1/2 IN LG	Z4820/T974 Z5394/HYL8869	4			
008	FORK, SLIDING CLUTCH, STEEL	Z4820/T56 Z5394/HYL8731	1			
009	KEY, WINCH DRIVE SHAFT, STEEL, 0.3 IN W, 0.25 IN H, 1.86 IN LG	Z4820/T988 Z5394/HYL8879	2			
010	CLUTCH, SLIDING, CAST STEEL	Z4820/T981 Z5394/HYL8875	1			
011	SPACER, DRUM, 40 MM ID, 60 MM OD, 1 MM THK, HARDENED STEEL	Z4820/T2902 Z5394/HYL8877	2			
012	SCREW, GRUB, 1/2 IN UNC, 1/2 IN LG, OXOSEAL PLATED	Z4820/T1043 Z5394/HYL8880	1			
013	DRUM, WINCH, GROOVED, 318 MM LG, 101 MM DIA DRUM, 238 MM DIA PLATE	Z4820/T2653 Z5394/HYL8882	1			



WINCH ASSEMBLY

GROUP UA
 TITLE WINCH ASSEMBLY

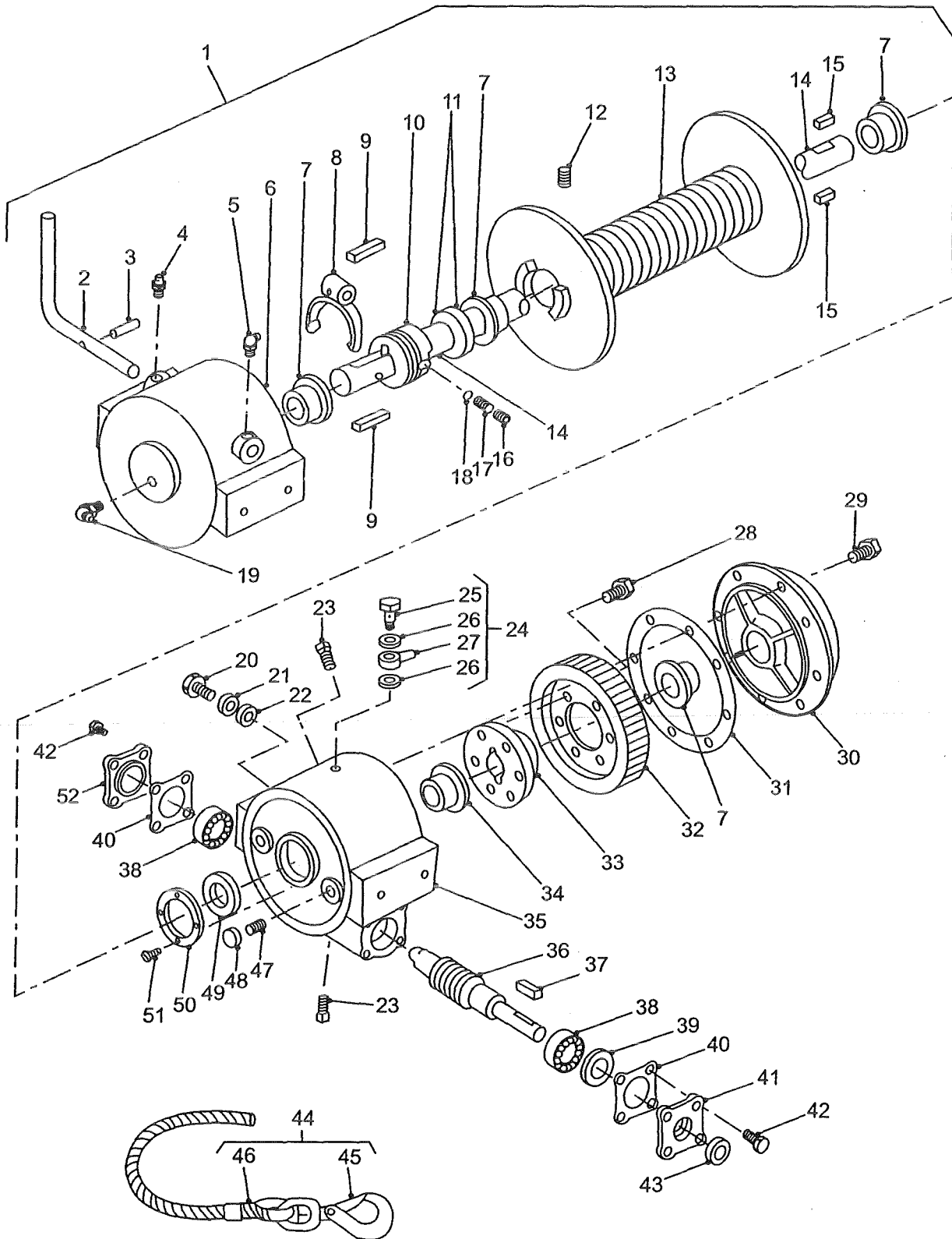
ITEM NO	DESIGNATION	NSN MANUFACTURER CODE/PART NO SUPPLIER CODE/PART NO	NO OFF	U O	E X	L* M* H*
014	SHAFT, DRIVE, WINCH DRUM, STEEL, 524 MM LG, 38.1 MM DIA	Z4820/T982 Z5394/HYL8876	1			
015	KEY, WINCH DRIVE SHAFT, STEEL, 3/8 IN BY 3/8 IN, 1.36 IN LG	Z4820/T987 Z5394/HYL8878	2			
016	SCREW, GRUB, 0.156 IN INTERNAL HEX DRIVE, 0.30 IN UNC THD, 18 TPI, 0.31 IN LG	Z4820/T2895 Z5394/HYL8739	1			
017	SPRING, DETENT, HELICAL COIL, 0.25 IN OD, 1.25 IN LG	Z4820/T61 Z5394/HYL8740	1			
018	BALL, DETENT, STEEL, 0.25 IN DIA	Z4820/T60 Z5394/HYL8741	1			
019	FITTING, LUBRICATION 90 DEG, 1/8 IN GAS THD	4730 66-128-5068 Z4820/T1649 Z5394/HYL8742	1EA		X	LMH
020	SCREW, HOUSING TO REAR MOUNTING BRACKET, 12 MM THD DIA, 1.75 MM PITCH, 30 MM LG, OXOSEAL PLATED	Z4820/T2494 Z5394/HYL8894	4			
021	WASHER, LOCK, 12 MM ID, ZINC PLATED	Z4820/T2537 Z5394/HYL8781	4			
022	WASHER, FLAT, RD, STEEL, 12 MM NOM BOLT SIZE, 24 MM OD, 2.50 MM THK	K4284/WA112081 Z5394/WA112081	4			
023	PLUG, OIL RESERVOIR, 1/2 IN SQUARE HD, 0.650 IN GAS THD	Z4820/T88 Z5394/HYL8745	2			
024	BREATHER WINCH HOUSING (INCLUDES UA 025 TO UA 027)	2520 66-128-5303 U1030/FRC9430 Z5394/FRC9430	1EA		X	LMH
025	BOLT, FLUID PASSAGE BSPF, STEEL, ZINC PLATED, 1/8 IN, 0.920 IN MAX, 0.900 IN MIN LG (ALSO PART OF UA 024)	4730 99-137-6379 U1030/595478 Z5394/R595478	1EA		X	LMH
026	WASHER, FIBRE BANJO FITTING SEALS (ALSO PART OF UA 024)	4930 99-842-3988 U1030/599575 Z5394/R599575	2EA		X	LMH

ISSUE NO: 3

REPAIR PARTS SCALE: 02186

PAGE NO: 23

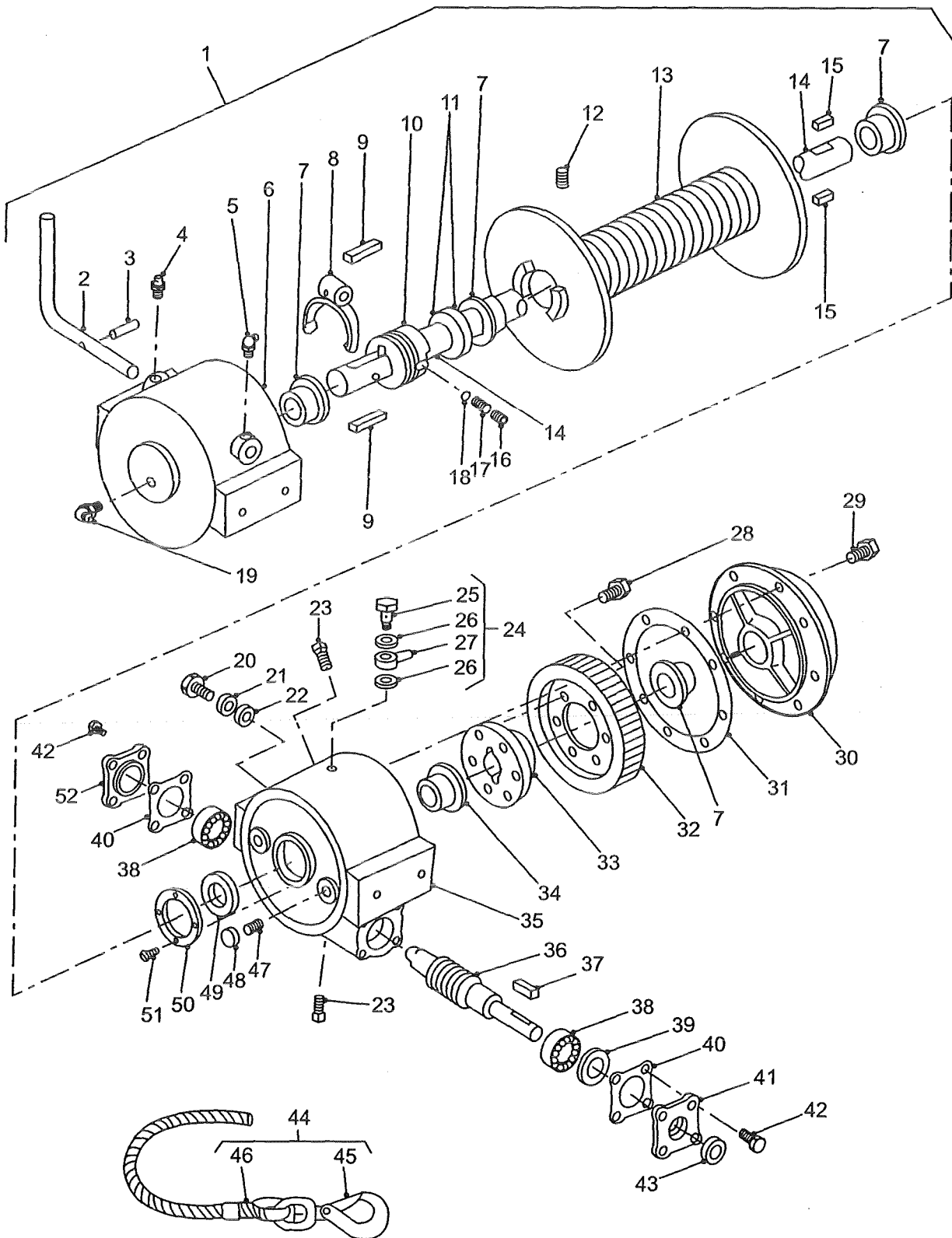
* GRADE OF REPAIR (LIGHT, MEDIUM OR HEAVY)



WINCH ASSEMBLY

GROUP UA
 TITLE WINCH ASSEMBLY

ITEM NO	DESIGNATION	NSN MANUFACTURER CODE/PART NO SUPPLIER CODE/PART NO	NO OFF	U	E	L*
				O	X	M*
				I	P	H*
027	PIPE, BREATHER, 6 MM OD, 4 MM ID, CLEAR PLASTIC, COMPLETE WITH 'BANJO' FITTING (USE UA 024)	/NIL /NIL	1			
901	CLIP, 'P', BREATHER PIPE TO SUSPENSION TOWER COVER	Z5394/AEU1448 Z5394/AEU1448	1			
902	SCREW, 'P' CLIP TO SUSPENSION TOWER COVER, RECESSED PAN HD, SELF TAPPING, POINTED, NO.8 GAUGE, 1/2 IN LG, ZINC PLATED	U1030/AB608041 Z5394/AB608041	1			
028	SCREW, GEAR TO HUB, SET, HEX HD, GRADE 8, 3/8 IN UNF, 1 IN LG, OXOSEAL PLATED	Z4820/T280 Z5394/HYL8864	6			
029	SCREW, COVERS TO HOUSING, SET, HEX HD, GRADE 5, 5/16 IN UNC, 1 IN LG, OXOSEAL PLATED	Z4820/T2896 Z5394/8756	16			
030	COVER, END, WINCH HOUSING	Z4820/T2888 Z5394/HYL8890	1			
031	GASKET PAPER, WINCH HOUSING TO END COVER	5330 66-128-5830 Z4820/T975 Z5394/HYL8870	1	EA	X	LMH
032	GEAR, WHEEL, WINCH DRIVE, BRASS	Z4820/T2889 Z5394/HYL8891	1			
033	HUB, GEAR WHEEL, STEEL	Z4820/T971 Z5394/HYL8866	1			
034	BUSH, HEADED, SINTERED BRONZE, 1-1/2 IN ID, 1-3/4 IN OD, 1-1/8 IN LG	Z4820/T2865 Z5394/HYL8887	1			
035	HOUSING, WINCH DRIVE GEAR, CAST ALUMINIUM	Z4820/T2655 Z5394/HYL8884	1			
036	GEAR, WORM, WINCH DRIVE	Z4820/T977 Z5394/HYL8872	1			

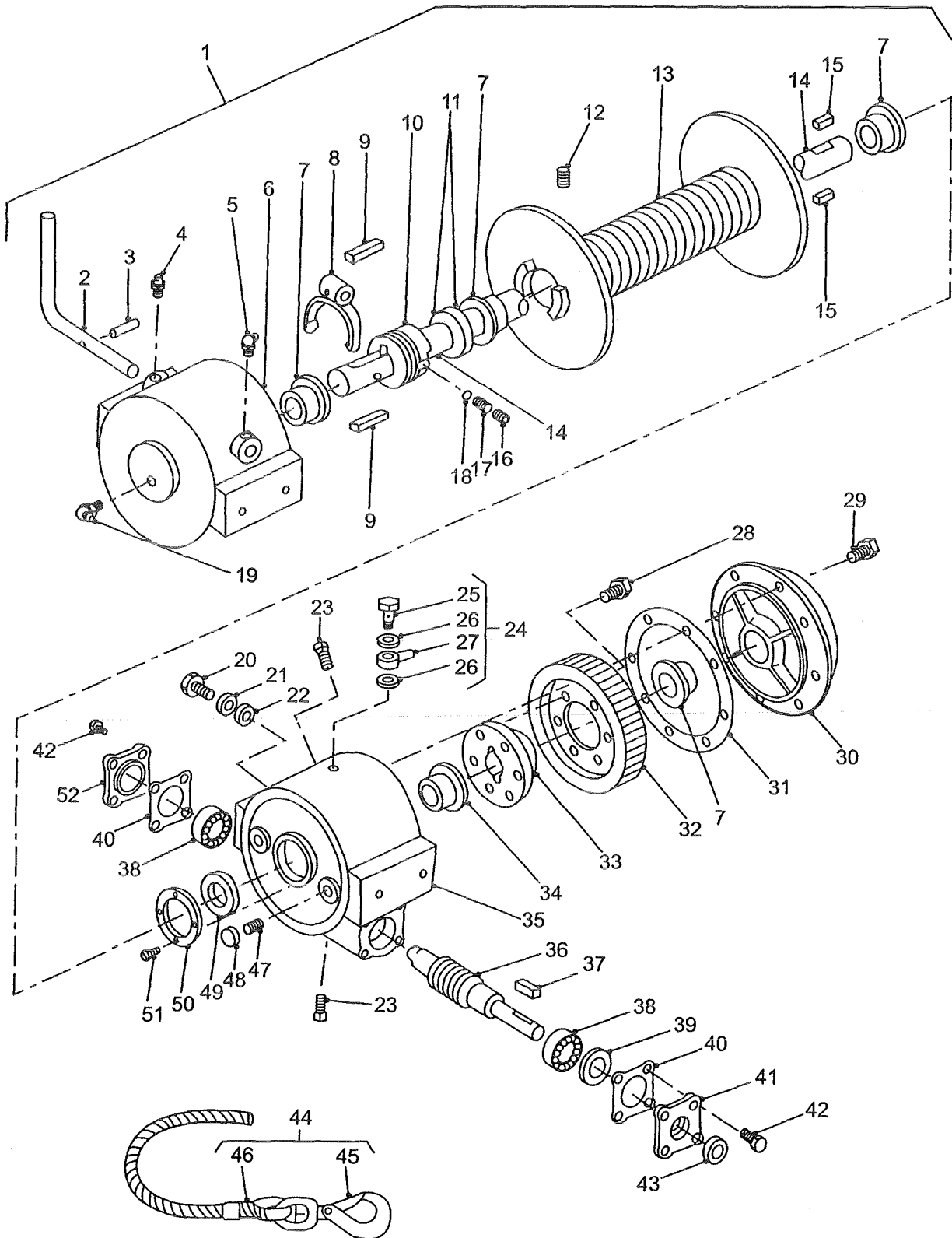


WINCH ASSEMBLY

GROUP UA
 TITLE WINCH ASSEMBLY

ITEM NO	DESIGNATION	NSN MANUFACTURER CODE/PART NO SUPPLIER CODE/PART NO	NO OFF	U	E	L*
				O	X	M*
				I	P	H*
037	KEY, WORM DRIVE SHAFT TO DRIVE LINE YOKE, 1/4 IN BY 1/4 IN, 1 IN LG, STEEL	Z4820/T553 Z5394/HYL8865	1			
038	BEARING, BALL, ANNULAR, RD, AXIAL LOAD	Z4820/T979 Z5394/HYL8874	2			
039	SHIM, PLASTIC, 56 MM ID, 62 MM OD, 0.08 MM THK (USE AS REQUIRED)	Z4820/T2914 Z5394/HYL9013	1			
903	SHIM, PLASTIC, 56 MM ID, 62 MM OD, 0.13 MM THK (USE AS REQUIRED)	Z4820/T2915 Z5394/HYL9014	1			
040	GASKET PAPER, WORM DRIVE END COVER TO WINCH HOUSING	5330 66-128-5831 Z4820/T976 Z5394/HYL8871	2EA	X		LMH
041	COVER, END, WORM DRIVE, REAR	Z4820/T973 Z5394/HYL8868	1			
042	SCREW, HEX HD, 5/16 IN UNC THD, 1 IN LG, MEDIUM TENSILE STEEL	Z4820/T80 Z5394/HYL8756	8			
043	SEAL, PLAIN ENCASED 7/8 IN ID, 1.5 IN OD, 3/8 IN THK	5330 66-128-5832 Z4820/T978 Z5394/HYL8873	1EA	X		LMH
044	WIRE ROPE ASSEMBLY, SINGLE LEG WINCH, 11.0 MM DIA, 45 M LG O/A, 1.77 TONNES WLL, C/W ATTACHMENTS (INCLUDES UA 045 AND UA 046)	4010 66-128-6449 Z2813/DPD/4010/2028 Z5394/AYG7475	1EA	X		LMH
045	HOOK, GRAB, SWIVEL (USE UA 044)	/NIL /NIL	1			
046	WIRE ROPE, 11.0 MM DIA (USE UA 044)	/NIL /NIL	1			
047	SPRING, HELICAL, COMPRESSION SPRING STEEL, 2.1 MM-2.3 MM WIRE DIA, 16/16 IN OD BY 3/4 IN O/A LG	5360 66-128-5204 Z4820/T68 Z5394/HYL8758	2EA	X		LMH
048	DISC BRAKE SHOE 21 MM MAJOR DIA, 11 MM THK, WINCH APPLICATION, 8 LOCATING LUGS	2530 66-128-5121 Z4820/T67 Z5394/HYL8759	2EA	X		LMH

* GRADE OF REPAIR (LIGHT, MEDIUM OR HEAVY)

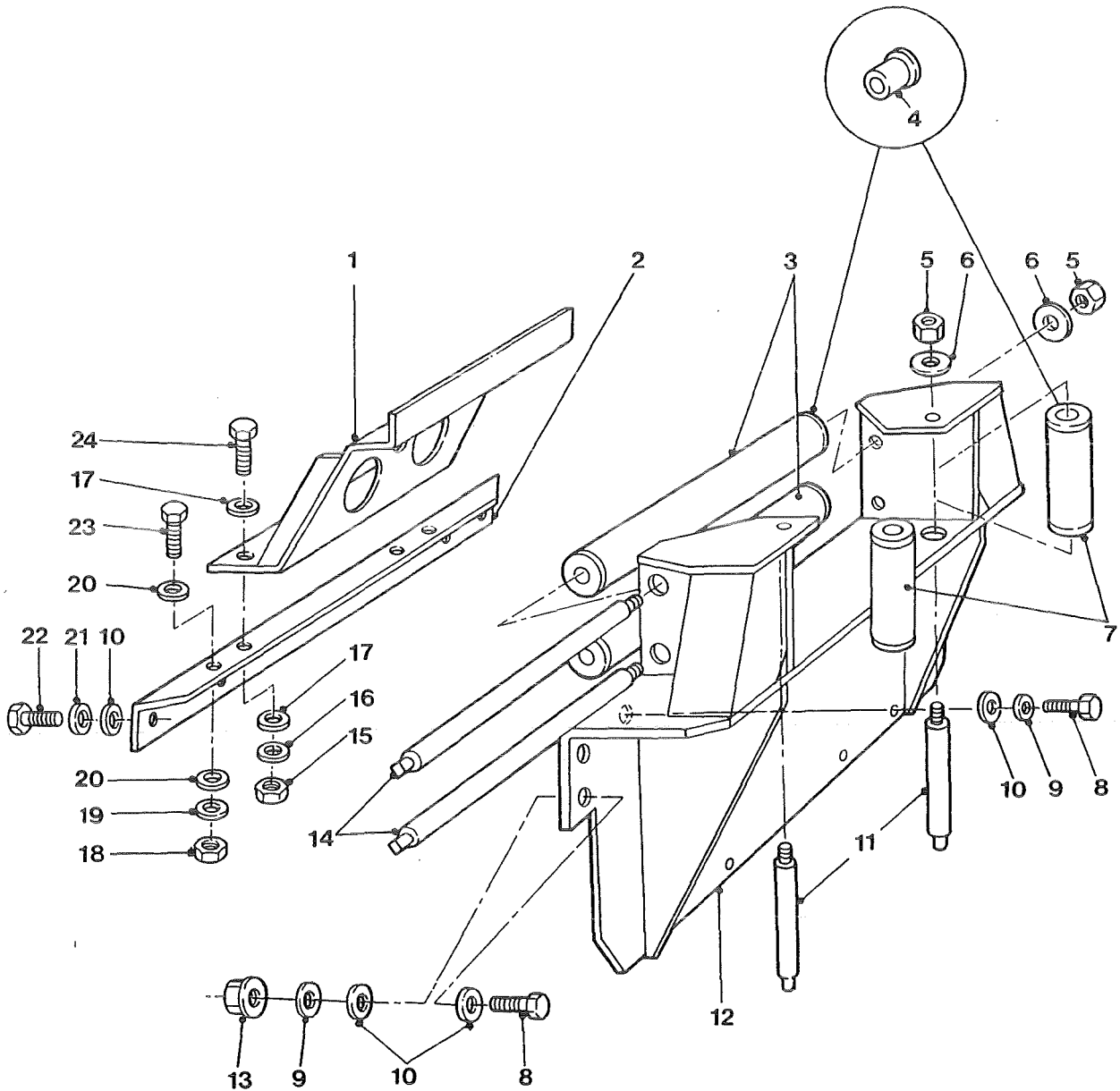


WINCH ASSEMBLY

GROUP UA
 TITLE WINCH ASSEMBLY

ITEM NO	DESIGNATION	NSN MANUFACTURER CODE/PART NO SUPPLIER CODE/PART NO	NO OFF	U O	E X	L* M* H*
049	SEAL, PLAIN ENCASED, 1.5 IN ID, 2.25 IN OD, 0.375 IN THK	5330 66-128-5834 Z4820/T2880 Z5394/HYL8888	1	EA	X	LMH
050	WASHER, THRUST, NYLON, 70 MM ID, 102 MM OD, 12.7 MM THK, ERTALON 6 PLA.	Z4820/T2887 Z5394/HYL8889	1			
051	SCREW, THRUST WASHER TO HOUSING, SET, COUNTERSUNK HD, 1/4 IN UNC, 1/2 IN LG, OXOSEAL PLATED	Z4820/T2900 Z5394/HYL8886	2			
052	COVER, END, WORM DRIVE, FRONT	Z4820/T972 Z5394/HYL8867	1			

* GRADE OF REPAIR (LIGHT, MEDIUM OR HEAVY)

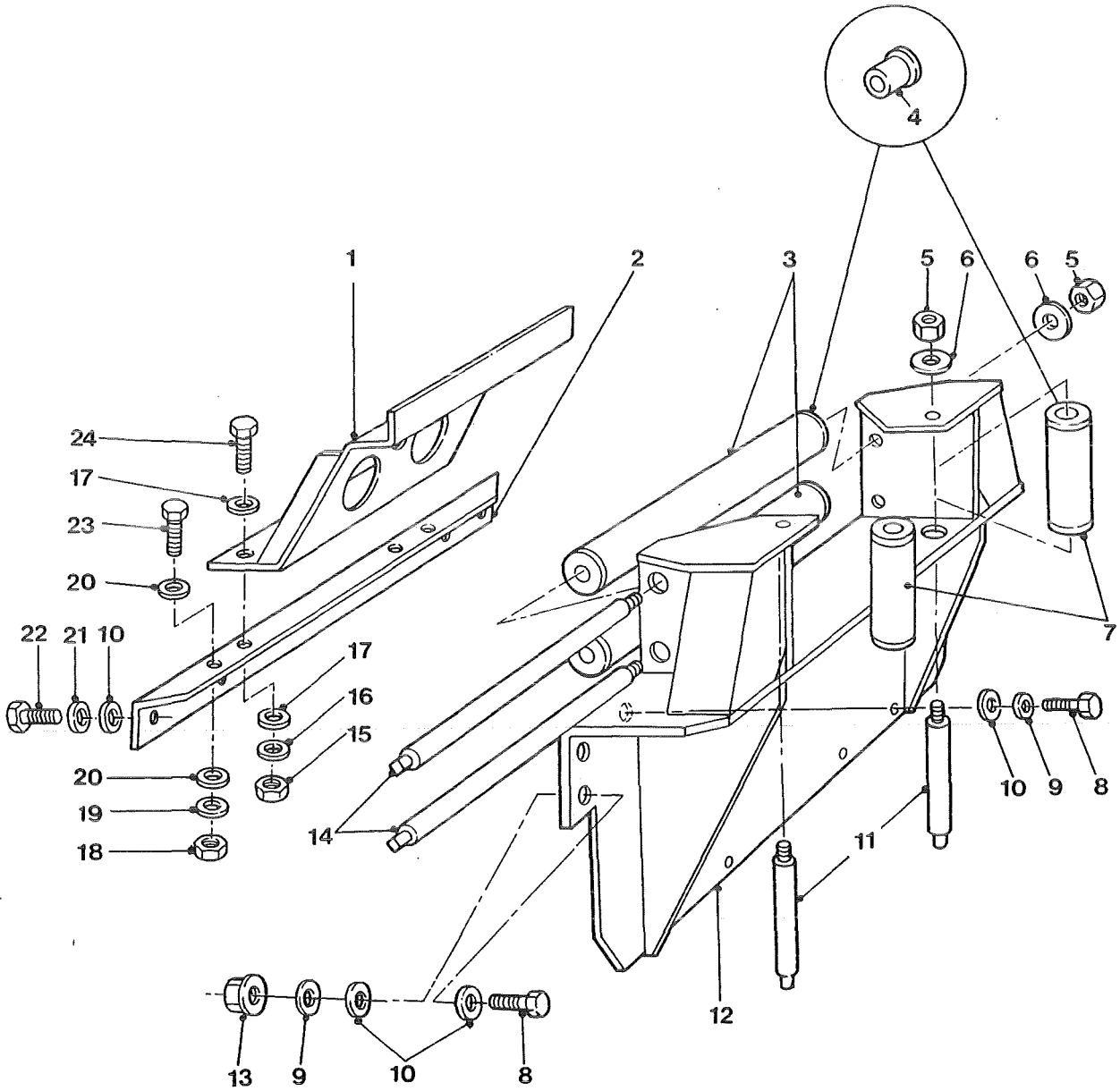


WINCH MOUNTINGS AND ROLLERS

GROUP UAA
 TITLE WINCH MOUNTINGS AND ROLLERS

ITEM NO	DESIGNATION	NSN MANUFACTURER CODE/PART NO SUPPLIER CODE/PART NO	NO	U	E	L*
			OFF	O	X	M*
			I	P	H*	
001	GUARD, GRILLE, 284 MM LG, 101 MM H, 3 MM THK, STEEL PLATE, C.R.C., 2 BY 55 MM DIA HOLES, 1 BY 25 MM DIA HOLE, HOT DIP GALVANIZED TO AS1650	Z5394/HYG1795 Z5394/HYG1795	1			
002	BRACKET, MOUNTING, REAR, WINCH, 51 MM BY 51 MM, 90 DEG ANGLE, 6.5 MM THK, STEEL, TO AS1204, GRADE 250, 500 MM LG, GALVANISED TO AS1650, 4 BY 12 MM DIA HOLES, 2 BY 8 MM DIA HOLES, 2 BY 10 MM DIA HOLES (ALSO PART OF UA 001)	Z5394/HYG2170 Z5394/HYG2170	1			
003	ROLLER ASSEMBLY, FAIRLEAD, HORIZONTAL, STEEL, 48.3 MM OD, 363 MM LG (INCLUDES UAA 004)	2590 66-128-5064 Z5394/HYG3138 Z5394/HYG3138	2	EA	X	LMH
004	BUSHING, SLEEVE BRONZE, 35.0 MM NOM LG, 32.0 MM NOM OD, 25.0 MM NOM ID, 39.0 MM NOM FLANGE OD, 3.5 MM NOM FLANGE WIDTH (ALSO PART OF UAA 003 AND UAA 007)	3120 66-128-5065 Z5394/MYH3327 Z5394/MYH3327	8	EA	X	LMH
005	NUT, SELF-LOCKING, HEXAGON ISO M, 6H, STEEL, ZINC PLATED, 16 MM, W/NYLON INSERT, 24 MM W A/F, 16 MM H	5310 99-122-5503 U1030/NY116041 Z5394/NY116041	4	EA	X	LMH
006	WASHER, FLAT RD, STEEL, ZINC PLATED, 16 MM BOLT SIZE, 30 MM OD BY 3 MM THK	5310 99-122-6479 U1030/WA116101 Z5394/WA116101	4	EA	X	LMH
007	ROLLER ASSEMBLY, FAIRLEAD, VERTICAL, STEEL (INCLUDES UAA 004)	2590 66-128-5066 Z5394/HYG3139 Z5394/HYG3139	2	EA	X	LMH
008	SCREW, MACHINE, ISO METRIC, STEEL, HEX HD, ZINC PLATED, 12 MM BY 45 MM LG, 1.75 MM PITCH	U1030/SH112451 Z5394/SH112451	8			
009	WASHER, LOCK STEEL, SPLIT HELICAL-RIGHT HAND, 12.0 MM ID	5310 99-138-9229 U1030/WL112001 Z5394/WL112001	8	EA	X	LMH
010	WASHER, FLAT RD, STEEL, 12 MM NOM BOLT SIZE, 24 MM OD, 2.50 MM THK	5310 99-122-6477 K4284/WA112081 Z5394/WA112081	16	EA	X	LMH

* GRADE OF REPAIR (LIGHT, MEDIUM OR HEAVY)

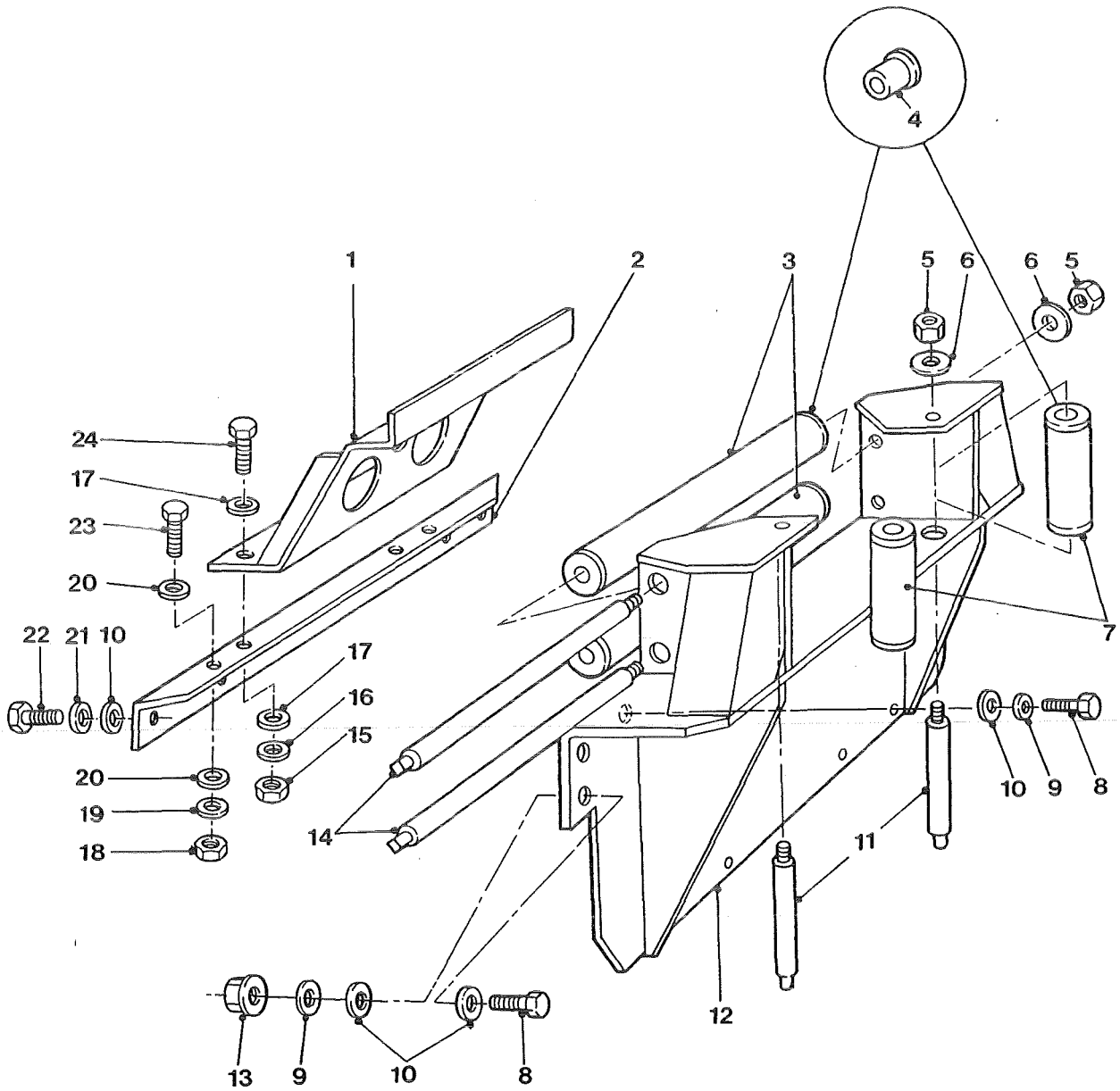


WINCH MOUNTINGS AND ROLLERS

GROUP UAA
 TITLE WINCH MOUNTINGS AND ROLLERS

ITEM NO	DESIGNATION	NSN MANUFACTURER CODE/PART NO SUPPLIER CODE/PART NO	NO	U	F	L*
			OFF	O	X	M*
			I	P	H*	
011	SHAFT, ROLLER.FAIRLEAD, VERTICAL, STEEL, 24 MM DIA	2590 66-128-5118 Z5394/HYG2113 Z5394/HYG2113	2EA		X	LMH
012	BRACKET, WINCH AND ROLLER MOUNTING.	Z5394/HYG2209 Z5394/HYG2209	1			
013	NUT, PLAIN, HEXAGON, STEEL, ISO M, 12 MM, COARSE THD, MEDIUM TENSILE, ZINC PLATED	U1030/NH112041 Z5394/NH112041	4			
014	SHAFT, ROLLER.FAIRLEAD, LONGITUDINAL, STEEL, 24 MM DIA	2590 66-128-5067 Z5394/HYG2112 Z5394/HYG2112	2EA		X	LMH
015	NUT, PLAIN, HEXAGON ISO METRIC, COARSE THD, 8 MM, ZINC PLT	5310 99-122-3402 Z5394/NH108041 Z5394/NH108041	2EA		X	LMH
016	WASHER, LOCK SPRING, STEEL, SINGLE TURN, SQUARE SECTION, ZINC PLATED, 8 MM BOLT SIZE	5310 99-138-9227 U1030/WL108001L Z5394/WM108001L	2EA		X	LMH
017	WASHER, FLAT ISO, STEEL, RD, ZINC PLATED, 8 MM ID, 17 MM OD, 1.60 MM THK	5310 99-122-6475 U1030/WC108051 Z5394/WC108051	4EA		X	LMH
018	NUT, PLAIN, HEXAGON ISOMETRIC, 6H, STEEL, ZINC PLATED AND CHROMATED, 10 MM DIA, 17 MM W A/F, 8 MM H O/A, CSK BOTH FACES	5310 99-122-5297 U1030/FN110041 Z5394/FN110041	2EA		X	LMH
019	WASHER, LOCK SPRING, STEEL, SINGLE TURN, ZINC PLATED , 10 MM, 15.90 MM OD 2.50 MM THK	5310 99-138-9228 U1030/WL110001L Z5394/WL110001L	2EA		X	LMH
020	WASHER, FLAT 10.5 MM ID, 21 MM OD, 2 MM THK, RD, STEEL, ZINC PLATED	5310 99-122-6476 U1030/WA110061 Z5394/WA110061	4EA		X	LMH
021	WASHER, LOCK STEEL, SPLIT HELICAL-RIGHT HAND, 12.0 MM ID	5310 66-128-5109 Z4820/T2537 Z4820/T2537	4EA		X	LMH
022	SCREW, HEX HD L, METRIC, 12 MM BY 25 MM LG, ZINC PLATED	5305 66-128-5113 Z4820/T2494 Z5394/HYL8870	4EA		X	LMH
023	BOLT, MACHINE METRIC, STEEL, HEX HD, ZINC PLATED, M10 BY 30 MM LG	5306 99-122-4911 U1030/FS110301L Z5394/FS110301	2EA		X	LMH

* GRADE OF REPAIR (LIGHT, MEDIUM OR HEAVY)

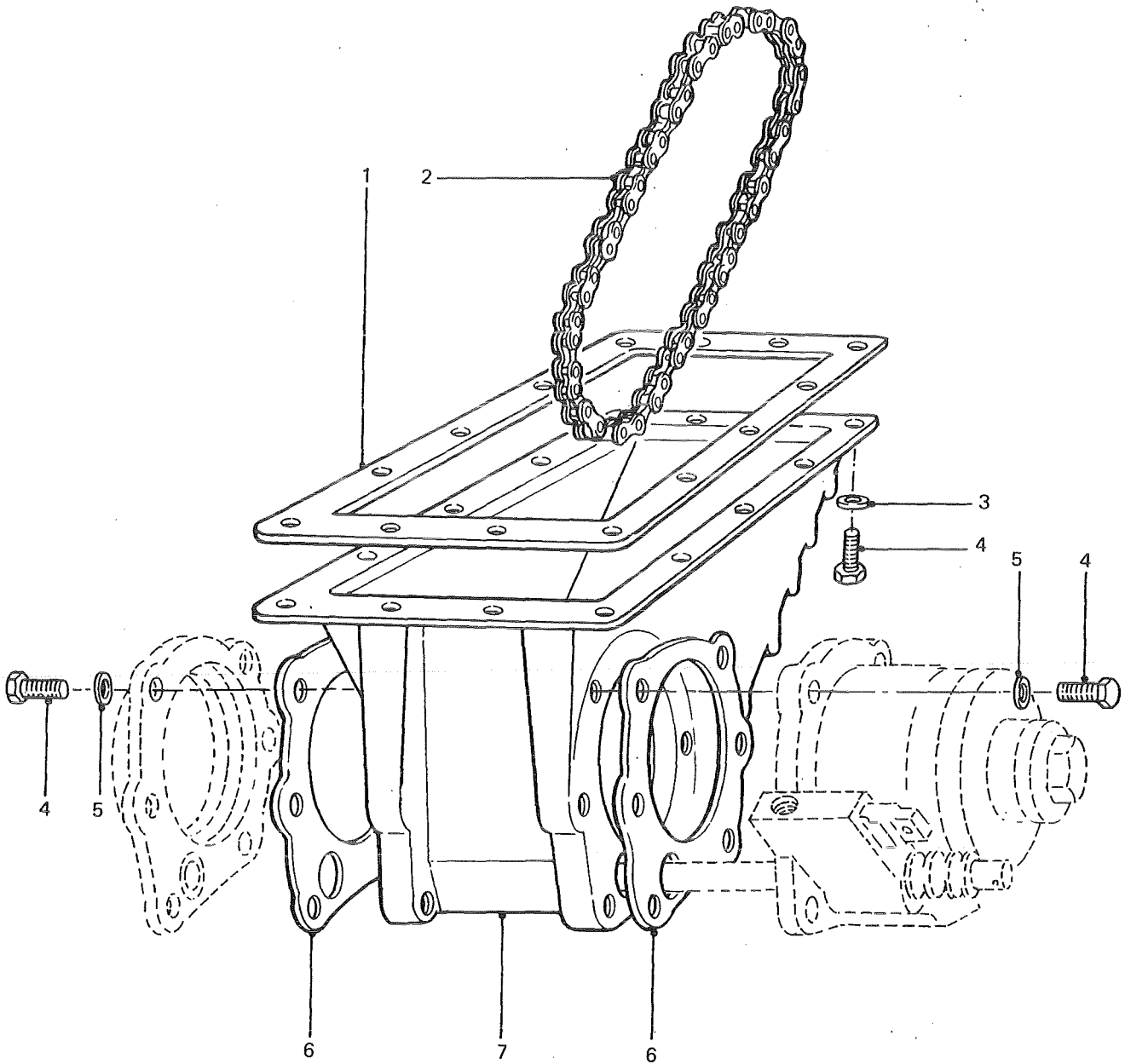


WINCH MOUNTINGS AND ROLLERS

GROUP UAA
 TITLE WINCH MOUNTINGS AND ROLLERS

ITEM NO	DESIGNATION	NSN MANUFACTURER CODE/PART NO SUPPLIER CODE/PART NO	NO	U	E	L*
			OFF	O	X	M*
			I	P	H*	
024	SCREW, FLANGE METRIC, STEEL, ZINC PLATED, M8 BY 25 MM LG	2520 99-277-6018 U1030/FS108251 Z5394/FS108251	2EA		X	LMH

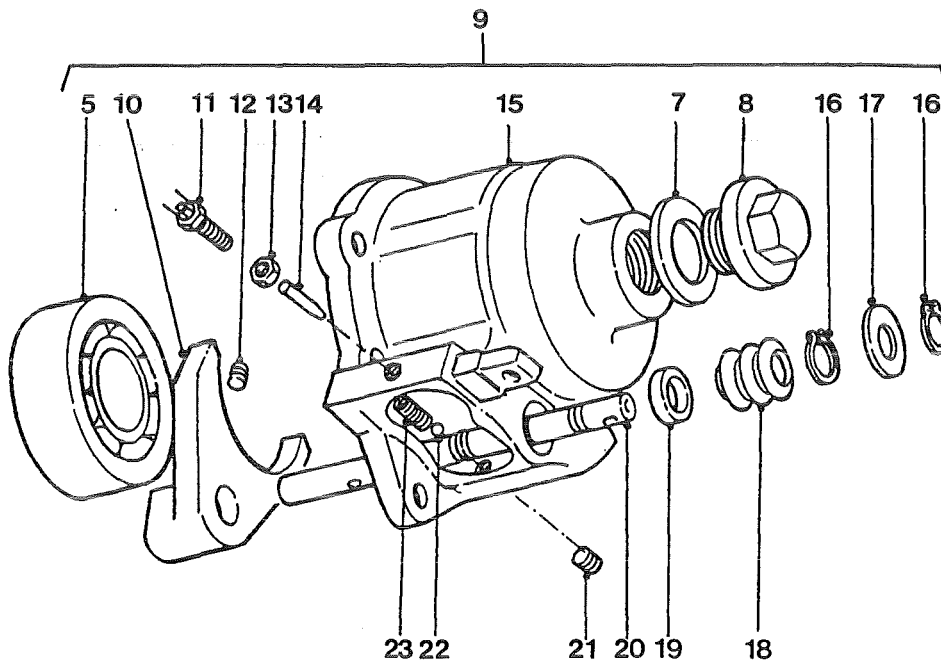
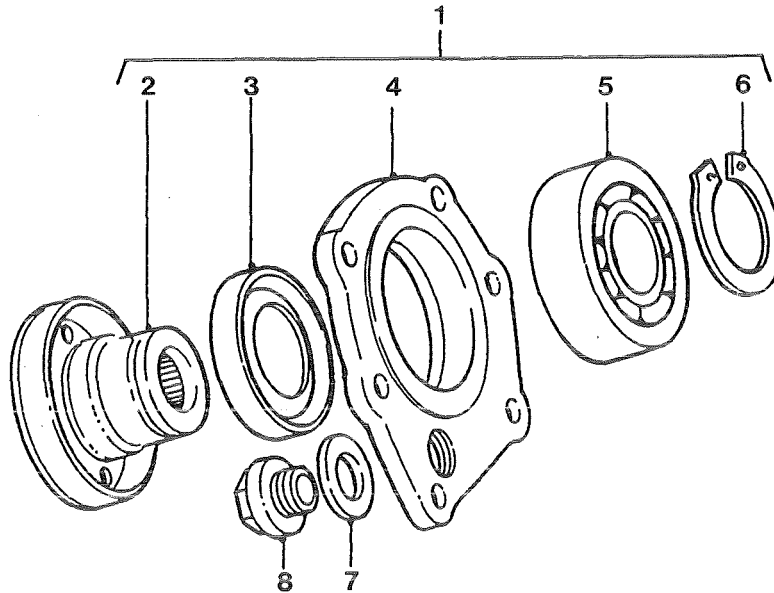
* GRADE OF REPAIR (LIGHT, MEDIUM OR HEAVY)



POWER TAKE-OFF HOUSING AND CHAIN

GROUP UC
 TITLE POWER TAKE-OFF HOUSING AND CHAIN

ITEM NO	DESIGNATION	NSN MANUFACTURER CODE/PART NO SUPPLIER CODE/PART NO	NO OFF	U O I	E X P	L* M* H*
001	GASKET, BOTTOM COVER ASBESTOS FIBRE AND SYNTHETIC RUBBER 309.0 MM LG, 190.0 MM W, 8.0 MM FACE W 0.75 MM THK, 14 HOLES 9.0 MM DIA	5330 99-822-1724 Z5394/FRC7104 Z5394/FRC7104	1	EA	X	MH
002	CHAIN, ROLLER, 0.5 IN PITCH, 28.5 IN LG, WINCH DRIVE	3020 66-073-6566 Z5394/AYG3351 Z5394/AYG3351	1	EA	X	MH
003	WASHER, LOCK STEEL, SINGLE COIL, SQUARE SECTION, 8 MM BOLT SIZE	5310 99-135-9302 Z5394/WM108001 Z5394/WM108001	14	EA	X	MH
004	SCREW, FLANGE METRIC, STEEL, ZINC PLATED, M8 BY 25 MM LG	2520 99-277-6018 U1030/FS108251 Z5394/FS108251	26	EA	X	MH
005	WASHER, LOCK SPRING, STEEL, SINGLE TURN, SQUARE SECTION, ZINC PLATED, 8 MM BOLT SIZE	5310 99-138-9227 U1030/WL108001L Z5394/WM108001L	12	EA	X	LMH
006	GASKET FRONT AND REAR PTO HOUSING, OIL RESISTANT PAPER	5330 66-128-5210 Z5394/AYG3353 Z5394/AYG3353	2	EA	X	LMH
007	HOUSING, PTO, CAST ALUMINIUM	Z5394/AYG3540 Z5394/AYG3540	1			

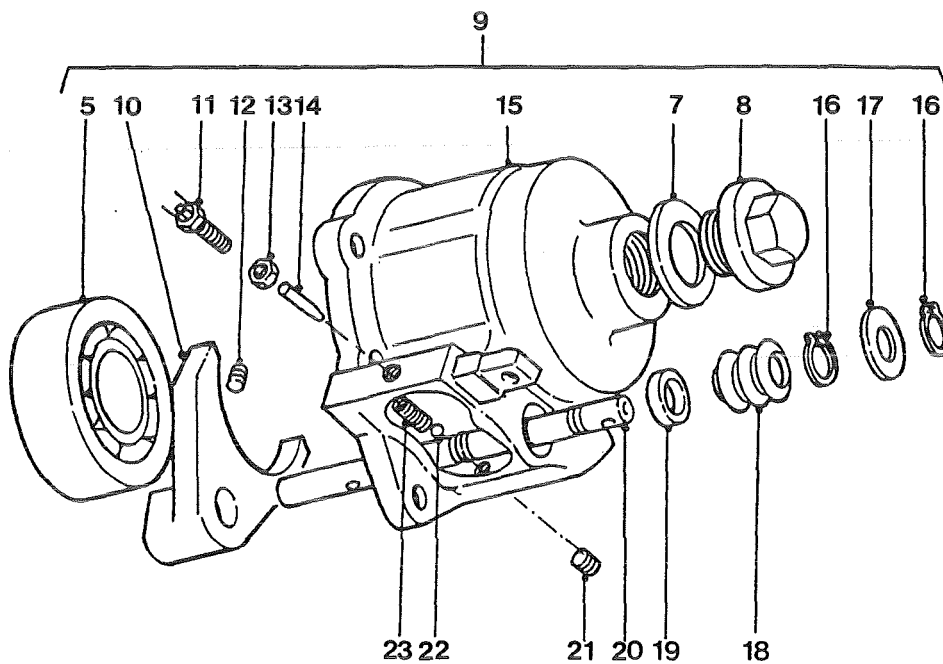
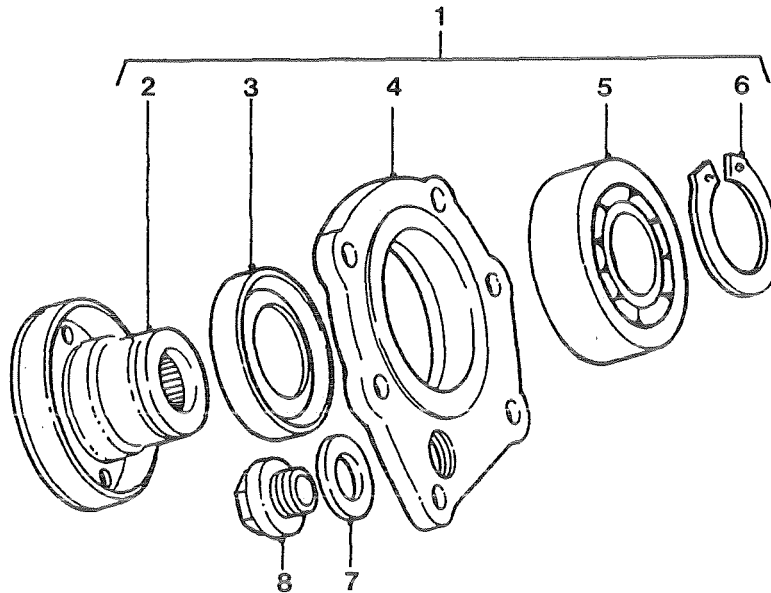


**POWER TAKE-OFF BEARINGS AND
SELECTOR HOUSING ASSEMBLIES**

GROUP UCA
TITLE POWER TAKE-OFF BEARING AND SELECTOR HOUSING ASSEMBLIES

ITEM NO	DESIGNATION	NSN MANUFACTURER CODE/PART NO SUPPLIER CODE/PART NO	NO	U	E	L*
			OFF	O	X	M*
				I	P	H*
001	BEARING HOUSING AND OUTPUT FLANGE ASSEMBLY, PTO (INCLUDES UCA 002 TO UCA 008)	U1030/AYG3376 Z5394/AYG3376	1			
002	FLANGE, COMPANION, UNIVERSAL JOINT OUTPUTWINCH (ALSO PART OF UCA 001)	3010 66-128-5232 Z5394/AYG3344 Z5394/AYG3344	1	EA	X	LMH
003	SEAL, PLAIN ENCASED 72 MM OD, 12 MM W, TO FIT 50 MM DIA SHAFT (ALSO PART OF UCA 001)	5330 66-128-5075 Z2823/CB845923/30 Z5394/MYH3106	1	EA	X	LMH
004	CAP, END, PTO HOUSING, CAST ALUMINIUM (ALSO PART OF UCA 001)	Z5394/AYG3343 Z5394/AYG3343	1			
005	BEARING, BALL, ANNULAR STEEL, 40 MM ID, 80 MM OD, 18 MM O/A W (ALSO PART OF UCA 001 AND UCA 009)	3110 00-554-5302 Z0570/SKF6208 Z5394/MYH3102	2	EA	X	MH
006	RING, RETAINING EXTERNAL CONTRACTING, 36.5 MM OD BY 1.75 MM THK (ALSO PART OF UCA 001)	5325 66-128-5076 Z5394/CR120405 Z5394/CR120405	1	EA	X	MH
007	JOINT WASHER (ALSO PART OF UCA 001 AND UCA 009)	5330 99-762-8209 U1030/FRC4810 Z5394/FRC4810	2	EA	X	LMH
008	CUTTER, PIPE PLUG, SCREWED, SI METRIC, BRASS HEX HD, 30 MM BY 13 MM LG (ALSO PART OF UCA 001 AND UCA 009)	5365 99-823-7205 U1030/90571104 Z5394/90571104	2	EA	X	LMH
009	CAP ASSEMBLY, TORQUE LIMITER, PTO (INCLUDES UCA 005, UCA 007, UCA 008, UCA 010 TO UCA 023)	U1030/AYG3531 Z5394/AYG3531	1			
010	FORK, SELECTOR, SLIDING CLUTCH, GUN METAL, CAST, MACHINE FINISH (ALSO PART OF UCA 009)	Z5394/AYG3348 Z5394/AYG3348	1			
011	SWITCH, WARNING LAMP, PTO (REFER GROUP QM 009, ALSO PART OF UCA 009)	Z0027/39184 Z5394/R575166	1			

* GRADE OF REPAIR (LIGHT, MEDIUM OR HEAVY)

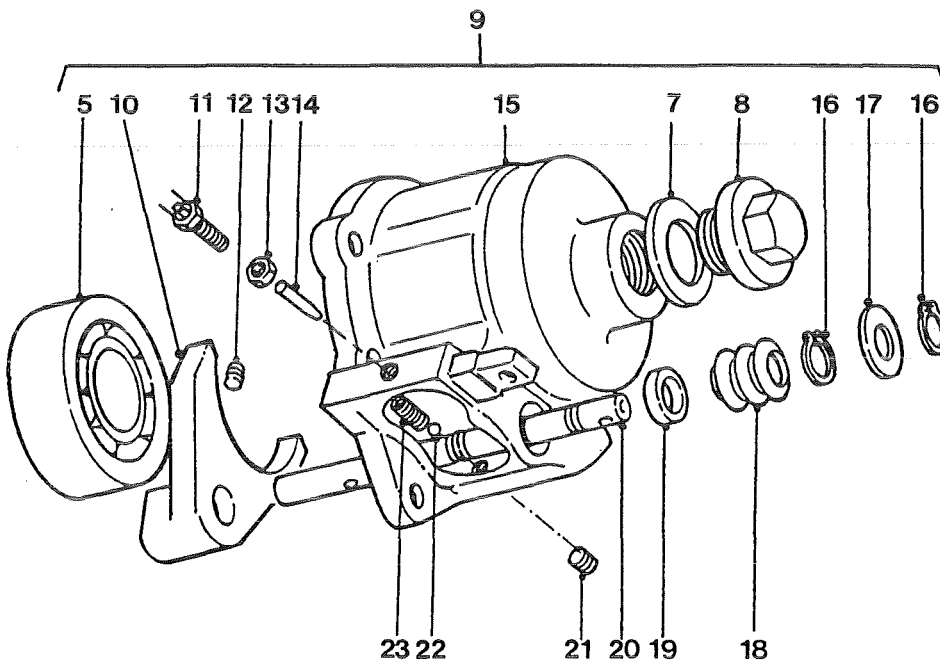
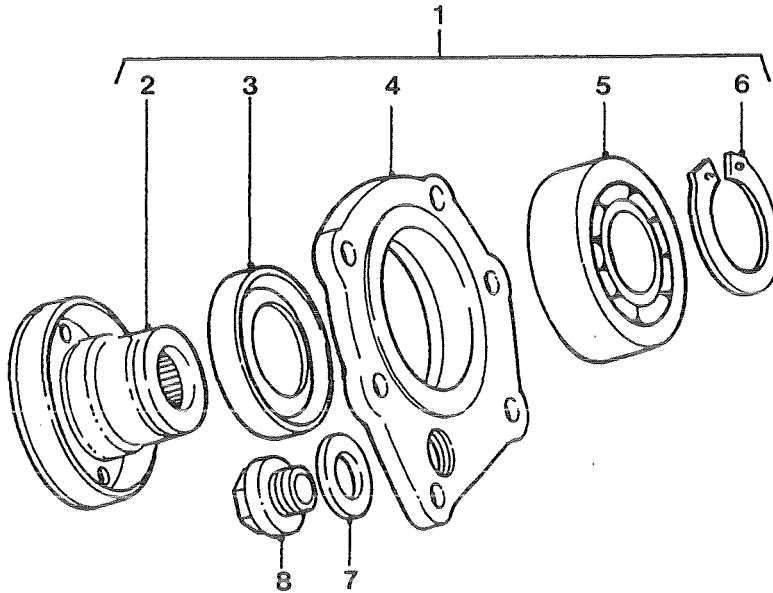


**POWER TAKE-OFF BEARINGS AND
SELECTOR HOUSING ASSEMBLIES**

GROUP UCA
 TITLE POWER TAKE-OFF BEARING AND SELECTOR HOUSING ASSEMBLIES

ITEM NO	DESIGNATION	NSN MANUFACTURER CODE/PART NO SUPPLIER CODE/PART NO	NO	U	E	L*
			OFF	O	X	M*
				I	P	H*
012	SCREW, SOCKET, SELECTOR FORK TO SHAFT, HEX, CUP POINT, 8 MM COARSE THD, 12 MM LG, NATURAL FINISH (ALSO PART OF UCA 009)	U1030/SK108120 Z5394/SK108120	1			
013	NUT, PLAIN, HEXAGON THIN, 3/8 UNF BRASS (ALSO PART OF UCA 009)	5310 66-128-5835 Z5394/NT606100 Z5394/NT606100	1	EA	X	LMH
014	PIN, STRAIGHT, HEADLESS PTO WARNING LIGHTACTUATOR (ALSO PART OF UCA 009)	5315 66-128-5836 Z5394/AYG3542 Z5394/AYG3542	1	EA	X	LMH
015	HOUSING, CAP, TORQUE LIMITER, PTO, CAST ALUMINIUM, EARLY TYPE (ALSO PART OF UCA 009)	Z5394/AYG3500 Z5394/AYG3500	1			
901	HOUSING, CAP, TORQUE LIMITER, PTO, CAST ALUMINIUM, LATE TYPE	Z5394/AYG3541 Z5394/AYG3541	1			
016	RING, RETAINING SPRING STEEL, EXTERNAL CONTRACTING, 12.9 MM ID, 1 MM THK, 1.7 MM LUG HOLE DIA (ALSO PART OF UCA 009)	5325 66-128-5077 Z5394/CR120145 Z5394/CR120145	2	EA	X	LMH
017	WASHER, FLAT 14 MM ID, ZINC PLT (ALSO PART OF UCA 009)	5310 99-122-6478 U1030/WA114001 Z5394/WA114001	1	EA	X	LMH
018	CAP, PROTECTIVE, DUST AND MOISTURE SEAL PTO SELECTOR SHAFT, MOULDED RUBBER CONVOLUTE, 25 MM OD, 19 MM ID, 35 MM LG, 0.9 MM THK (ALSO PART OF UCA 009)	5340 66-128-5081 Z5394/DAM3022 Z5394/DAM3022	1	EA	X	LMH
019	SEAL, OIL, SELECTOR S SEAL, PLAIN ENCASED, SINGLE LIP, 31.75 MM OD, 5 MM THK BY 15 MM SHAFT DIA (ALSO PART OF UCA 009)	5330 99-824-0238 K4284/AHU1672 Z5394/AHU1672	1	EA	X	LMH
020	SHAFT, SELECTOR, SLIDING CLUTCH, 148 MM LG, 14.96 MM DIA, STAINLESS STEEL (ALSO PART OF UCA 009)	Z5394/AYG3481 Z5394/AYG3481	1			

* GRADE OF REPAIR (LIGHT, MEDIUM OR HEAVY)

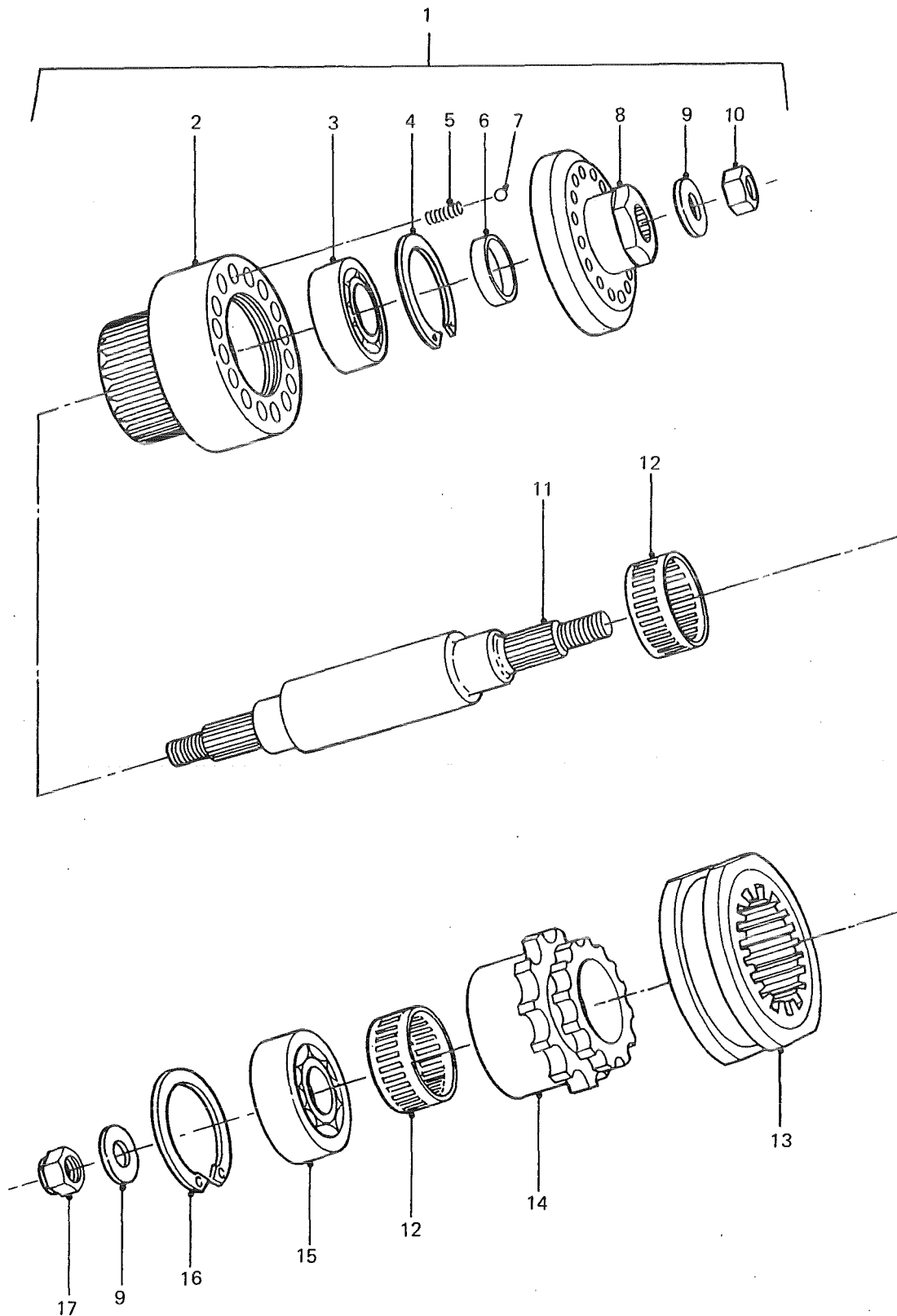


**POWER TAKE-OFF BEARINGS AND
SELECTOR HOUSING ASSEMBLIES**

GROUP UCA
 TITLE POWER TAKE-OFF BEARING AND SELECTOR HOUSING ASSEMBLIES

ITEM NO	DESIGNATION	NSN MANUFACTURER CODE/PART NO SUPPLIER CODE/PART NO	NO	U	E	L*
			OFF	O	X	M*
			I	P	H*	
021	PLUG, MACHINE THD RETAINING, TAPER, 0.47 IN LG, 0.25 IN NPTF THD, 0.25 IN INT HEX HD, BRASS (ALSO PART OF UCA 009)	5365 66-128-5082 ZR910/03254507 Z5394/MYH3110	1EA		X	LMH
022	BALL, BEARING (ALSO PART OF UCA 009)	3110 99-718-1217 U1030/571146 Z5394/R571146	1EA		X	LMH
023	SPRING (ALSO PART OF UCA 009)	5360 99-823-8019 U1030/593802 Z5394/R593802	1EA		X	LMH

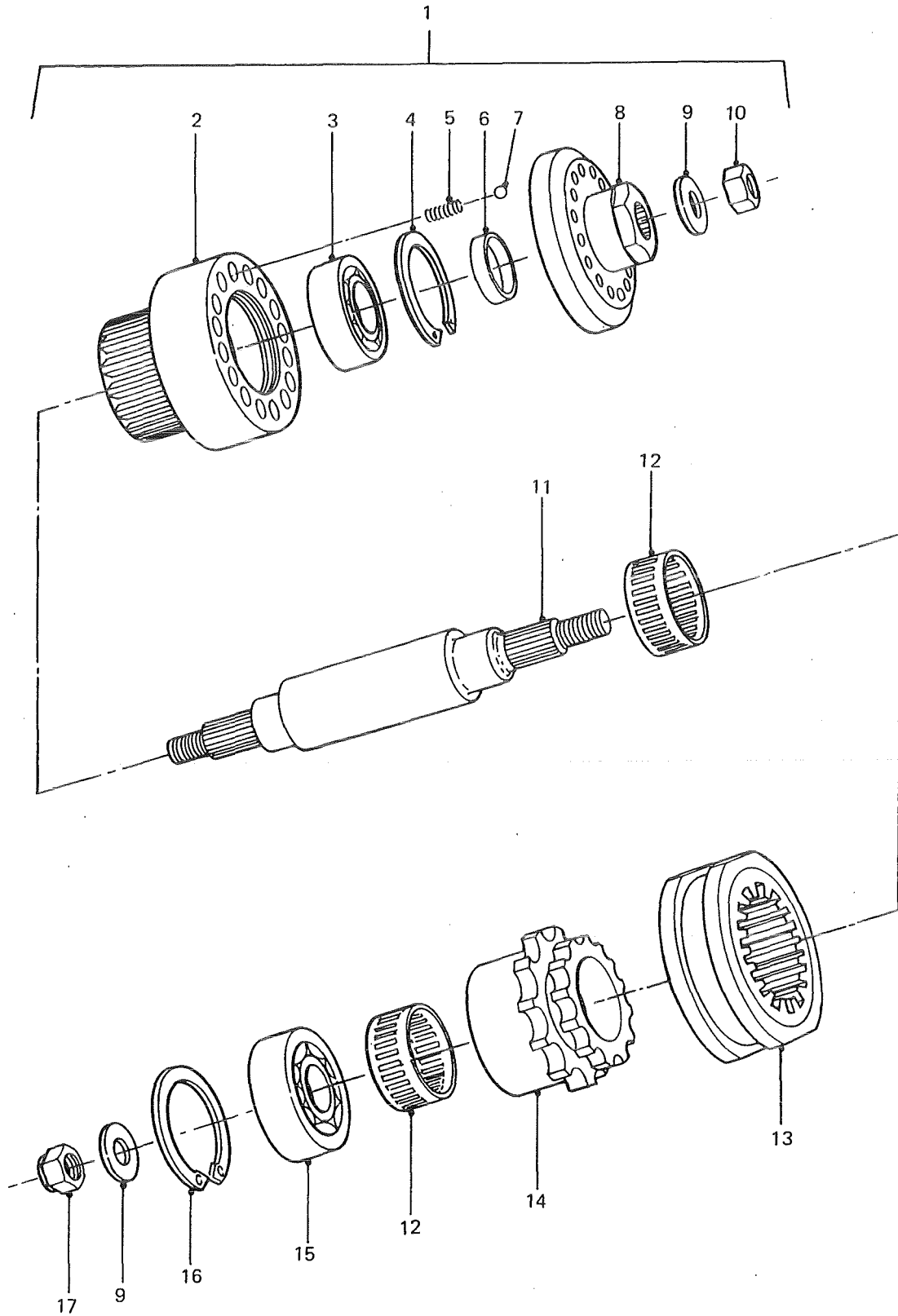
* GRADE OF REPAIR (LIGHT, MEDIUM OR HEAVY)



POWER TAKE-OFF AND TORQUE LIMITER

GROUP UCB
 TITLE POWER TAKE-OFF AND TORQUE LIMITER

ITEM NO	DESIGNATION	NSN MANUFACTURER CODE/PART NO SUPPLIER CODE/PART NO	NO	U	E	L*
			OFF	O	X	M*
			I	P	H*	
001	TORQUE LIMITER ASSEMBLY (INCLUDES UCB 002 TO UCB 009 - 1 OFF AND UCB 010 TO UCB 016)	Z5394/AYG3486 Z5394/AYG3486	1			
002	HOUSING, TORQUE LIMITER	Z5394/AYG3406 Z5394/AYG3406	1			
003	BEARING, BALL, ANNULAR 52 MM OD, 25 MM ID 15 MM W	3110 00-144-8518 Z0570/SKF6205 Z5394/MYH3169	1EA		X	MH
004	RING, RETAINING INTERNAL EXPANDING, 56 MM OD, 2 MM THK	5325 66-128-5078 U1030/CR110525 U1030/CR110525	1EA		X	MH
005	SPRING, HELICAL, COMPRESSION 21 MM LG, 1.2 MM WIRE DIA	5360 66-128-5083 Z5394/AYG3492 Z5394/AYG3492	16EA		X	MH
006	SHIM, STEEL, 32 MM OD, 25.3 MM ID, 5.5 MM THK (USE AS REQUIRED)	Z5394/AYG3410 Z5394/AYG3410	1			
901	SHIM, STEEL, 32 MM OD, 25.3 MM ID, 6.00 MM THK (USE AS REQUIRED)	Z5394/AYG3411 Z5394/AYG3411	1			
902	SHIM, STEEL, 32 MM OD, 25.3 MM ID, 6.50 MM THK (USE AS REQUIRED)	Z5394/AYG3412 Z5394/AYG3412	1			
007	BALL, BEARING 8 MM DIA, STEEL	3110 66-128-5119 Z5394/MYH3170 Z5394/MYH3170	16EA		X	MH
008	PLATE, TORQUE LIMITER DRIVE	Z5394/AYG3518 Z5394/AYG3518	1			
009	WASHER, FLAT RD, STEEL, 12 MM NOM BOLT SIZE, 24 MM OD, 2.50 MM THK (ALSO PART OF UCB 001 -1 OFF)	5310 99-122-6477 K4284/WA112081 Z5394/WA112081	2EA		X	MH
010	NUT, SELF-LOCKING, HEXAGON ISO M, STEEL, ZINC PLATED, 12 MM THD	5310 99-139-9037 K4284/NV112041 Z5394/NV112041	1EA		X	MH
011	SHAFT, PTO, 223 MM LG, 12 MM THD EACH END	Z5394/AYG3408 Z5394/AYG3408	1			

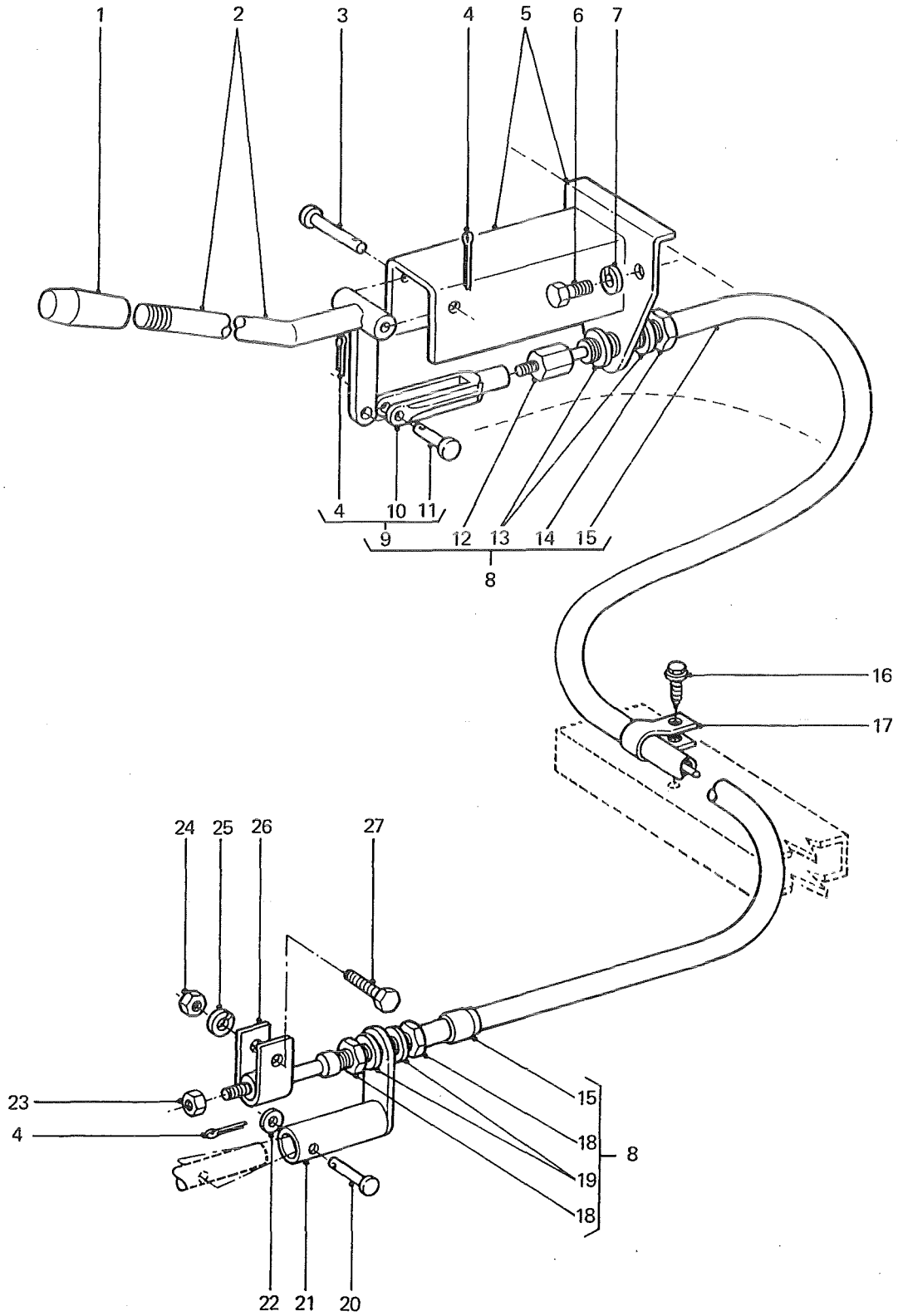


POWER TAKE-OFF AND TORQUE LIMITER

GROUP UCB
 TITLE POWER TAKE-OFF AND TORQUE LIMITER

ITEM NO	DESIGNATION	NSN MANUFACTURER CODE/PART NO SUPPLIER CODE/PART NO	NO	U	E	L*
			OFF	O	X	M*
			I	P	H	
012	BEARING, ROLLER, NEEDLE OVERALL STEEL, 20.00 MM O/A W, 42.00 MM OD, 35.00 MM ID	3110 12-146-8373 Z0570/SKFRHNA354220 Z5394/MYH3104	2	EA	X	MH
013	CLUTCH, SLIDING, 82 MM OD, 27 MM W, 9 BY 6.25 MM GROOVE, 52 MM ID, 6.75 MM TOOTH DEPTH	Z5394/AYG3517 Z5394/AYG3517	1			
014	SPROCKET, DRIVEN, OUTPUT	Z5394/AYG3346 Z5394/AYG3346	1			
015	BEARING, BALL, ANNULAR GROUND, SINGLE ROW RADIAL, NON-LOADING GROOVE, 25 MM ID, 62 MM OD, 17 MM W	3110 66-013-7823 Z0570/SKF6305 Z5394/MYH3103	1	EA	X	MH
016	RING, RETAINING INTERNAL EXPANDING, 65 MM OD, 2 MM THK	5325 66-128-5079 Z5394/CR110625 Z5394/CR110625	1	EA	X	MH
017	NUT, SELF-LOCKING, HEXAGON METRIC, STEEL, ZINC PLATED, 12 MM 19 MM W A/F, 14 MM H, W/NULON INSERT	5310 99-122-5498 U1030/NY112041 Z5394/NY112041	1	EA	X	MH

* GRADE OF REPAIR (LIGHT, MEDIUM OR HEAVY)

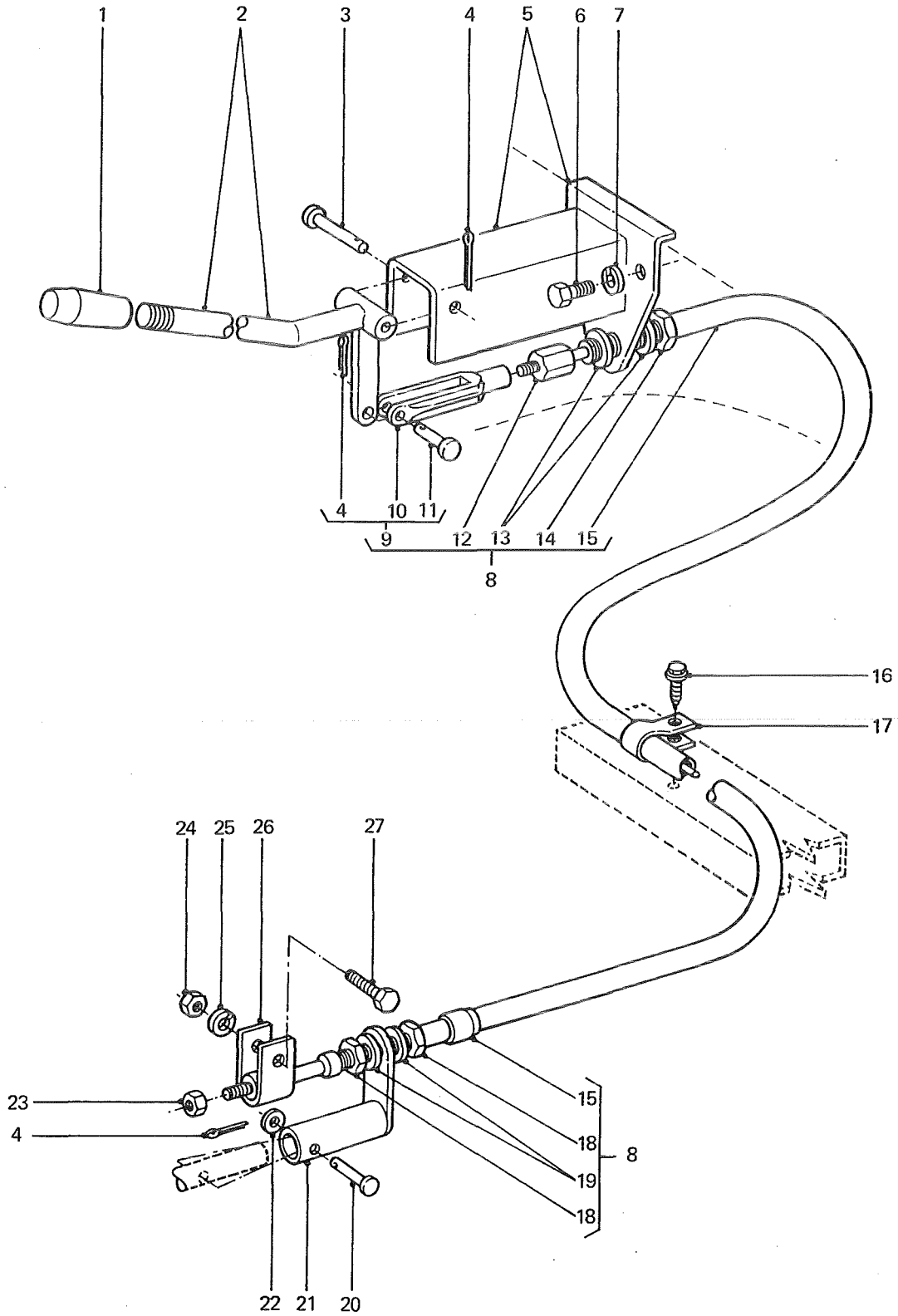


POWER TAKE-OFF CONTROL CABLE

GROUP UCC
 TITLE POWER TAKE-OFF CONTROL CABLE

ITEM NO	DESIGNATION	NSN MANUFACTURER CODE/PART NO SUPPLIER CODE/PART NO	NO	U	E	L*
			OFF	O	X	M*
			I	P	F	H*
001	KNOB, PTO LEVER BAKELITE, BLACK FINISH, 3/8 IN BSW THD, 45 MM LG	2540 66-128-5837 Z5394/AYG3508 Z5394/AYG3508	1	EA	X	LMH
002	LEVER ASSEMBLY, HAND, PTO	Z5394/AYG3506 Z5394/AYG3506	1			
003	PIN, STRAIGHT, HEADED STEEL, 6MM DIA, 28 MM LG, ZINC PLATED	5315 66-128-5838 Z5394/PC106561 Z5394/PC106561	1	EA	X	LMH
004	PIN, COTTER 1.5 MM BY 12 MM LG	5315 66-128-5106 Z5394/PS103121 Z5394/PS103121	3	EA	X	LMH
005	BRACKET ASSEMBLY, MOUNTING, PTO LEVER	Z5394/AYG3512 Z5394/AYG3512	1			
006	SCREW, MACHINE, ISOMETRIC STEEL, HEX HD, ZINC PLATED, 8 MM BY 20 MM LG	Z5394/FS108207L Z5394/FS108207L	2			
007	WASHER, LOCK, SPRING, STEEL, SINGLE TURN, SQUARE SECTION, ZINC PLATED, 8 MM BOLT SIZE	U1030/WL108001L Z5394/WM108001L	2			
008	CONTROL ASSEMBLY, PUSH-PULL PTO CABLE, 1300 MM LG, C/W ATTACHMENTS (INCLUDES UCC 009, UCC 012 TO UCC 015, UCC 018 AND UCC 019)	2590 66-128-5839 Z5394/AYG3513 Z5394/AYG3513	1	EA	X	LMH
009	YOKE ASSEMBLY, PTO CABLE (INCLUDES UCC 004 - 1 OFF, UCC 010 AND UCC 011, ALSO PART OF UCC 008)	Z5394/MYH3322 Z5394/MYH3322	1			
010	YOKE, PTO CABLE (USE UCC 009)	/NIL /NIL	1			
011	PIN, STRAIGHT, HEADED STEEL, ZINC PLATED, 6 MM DIA, 20 MM LG (ALSO PART OF UCC 009)	5315 66-128-5840 Z5394/PC106201 Z5394/PC106201	1	EA	X	LMH

* GRADE OF REPAIR (LIGHT, MEDIUM OR HEAVY)

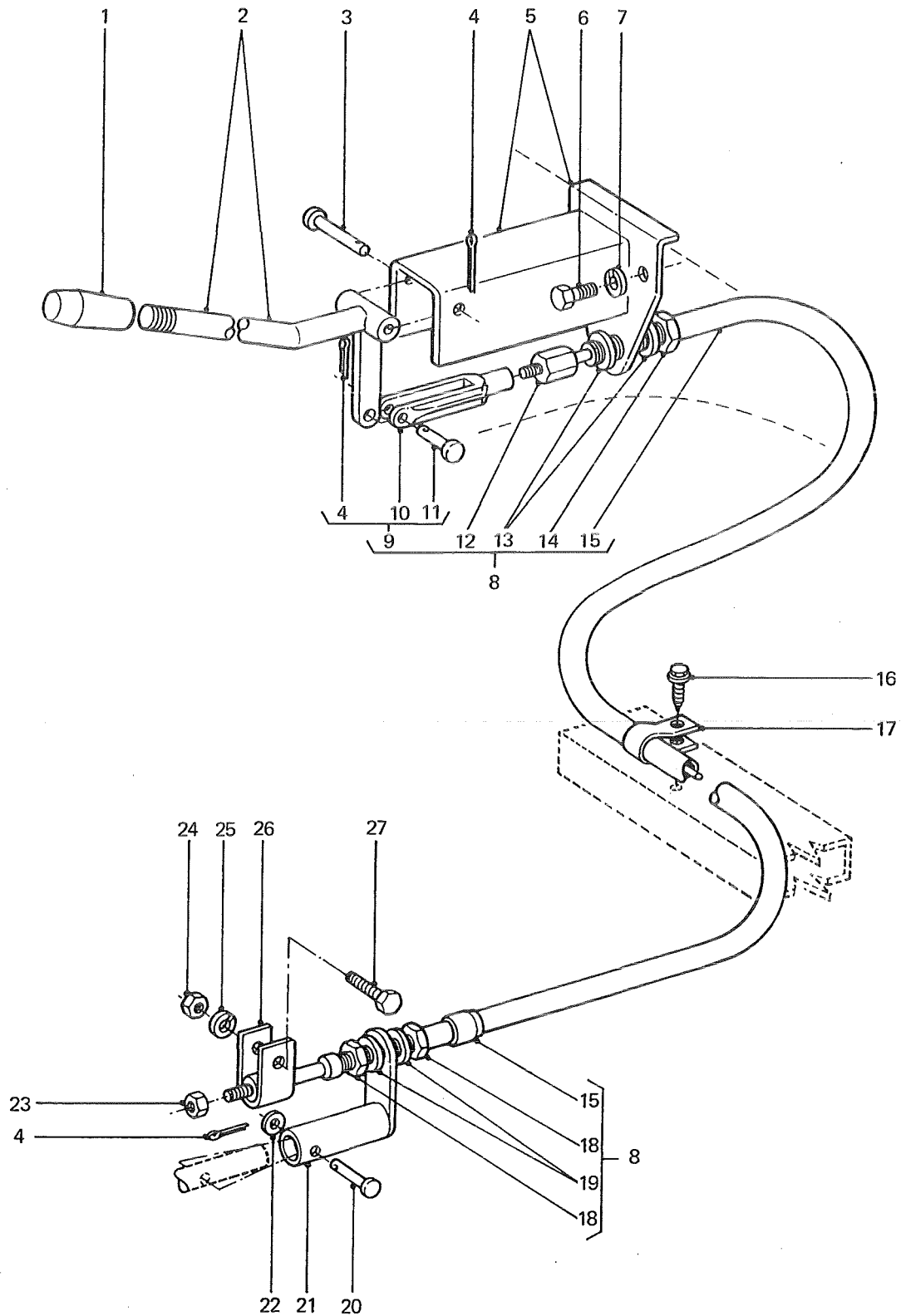


POWER TAKE-OFF CONTROL CABLE

GROUP UCC
 TITLE POWER TAKE-OFF CONTROL CABLE

ITEM NO	DESIGNATION	NSN MANUFACTURER CODE/PART NO SUPPLIER CODE/PART NO	NO OFF	U O I P	B X P	L* M* H*
012	NUT ASSEMBLY, PTO CABLE, HEX, BRASS, 14 MM A/F, 13 MM LG, 3/8 IN THD DIA, 24 TPI UNF (INCLUDES UCC 901, USE UCC 008)	/NIL /NIL	1			
901	'O' RING, SEALING, PTO CABLE NUT, RUBBER, 10 MM OD, 7 MM ID (USE UCC 012)	/NIL /NIL	1			
013	WASHER, FLAT, 1/2 IN ID, ZINC PLATED (USE UCC 008)	/NIL /NIL	2			
014	NUT, PTO CABLE, HEX, THIN, 11 MM DIA THD, 1.5 MM PITCH, STEEL, ZINC PLATED (USE UCC 008)	/NIL /NIL	1			
015	CABLE, PTO (USE UCC 008)	/NIL /NIL	1			
016	SCREW, SELF-DRILLING	5305 66-128-5341 Z2665/6-311-0038-5 Z5394/MYH3337	1	EA	X	LMH
017	CLIP, 'P', PTO CONTROL CABLE TO CHASSIS, 0.28 IN DIA HOLE, 1 IN ID, CLOSED, PROTECTIVE SLEEVE	Z5394/HYG5287 Z5394/HYG5287	1			
018	NUT, PTO CABLE, HEX, 11 MM DIA THD, 1.25 MM PITCH, 18 MM A/F, 7 MM THK, ZINC PLATED (USE UCC 008)	/NIL /NIL	2			
019	WASHER, FLAT, 11 MM ID, ZINC PLATED (USE UCC 008)	/NIL /NIL	2			
020	PIN, STRAIGHT, HEADED 6 MM DIA BY 30 MM LG, ZINC PLT	5315 66-128-5105 Z5394/PC106481 Z5394/PC106481	1	EA	X	LMH
021	SLEEVE AND ARM ASSEMBLY, PTO CABLE	Z5394/AYG3504 Z5394/AYG3504	1			
022	WASHER, FLAT, NORMAL THK, NORMAL OD, 6 MM ID, ZINC PLATED	U1030/WA106001L Z5394/WA106001L	1			

* GRADE OF REPAIR (LIGHT, MEDIUM OR HEAVY)

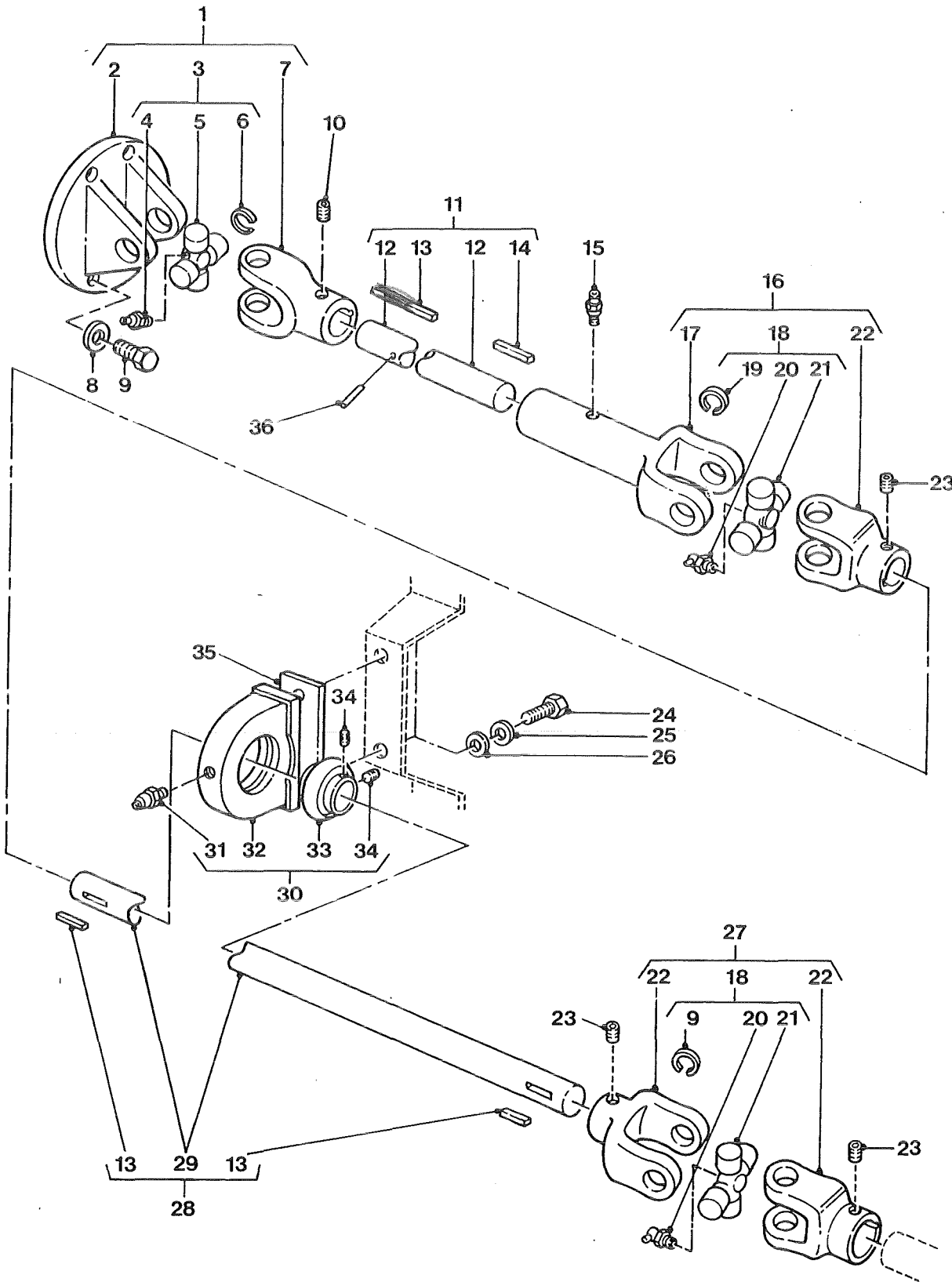


POWER TAKE-OFF CONTROL CABLE

GROUP UCC
 TITLE POWER TAKE-OFF CONTROL CABLE

ITEM NO	DESIGNATION	NSN MANUFACTURER CODE/PART NO SUPPLIER CODE/PART NO	NO OFF	U O I	E X P	L* M* H*
023	NUT, SELF-LOCKING, HEXAGON UNF, STEEL, NYLON INSERT, 5/16 IN	5310 66-128-4629 Z5394/NY910041 Z5394/NY910041	1	EA	X	LMH
024	NUT, PLAIN, HEXAGON STEEL, 6 MM, ZINC PLT	5310 99-122-5295 U1030/JLM9687 Z5394/JLM9687	1	EA	X	LMH
025	WASHER, LOCK SINGLE COIL, 6 MM ID	5310 99-208-6458 U1030/WL106001L Z5394/WL106001L	1	EA	X	LMH
026	BRACKET ASSEMBLY, PTO CABLE TO HOUSING	Z5394/AYG3503 Z5394/AYG3503	1			
027	SCREW, CAP, HEXAGON HEAD O METRIC, 6G, STEEL, HEXHD, ZINC PLATED, 6 MM DIA, 1 MM PITCH, 30 MM LG	5305 99-122-5363 U1030/SH106301 Z5394/SH106301	1	EA	X	LMH

* GRADE OF REPAIR (LIGHT, MEDIUM OR HEAVY)

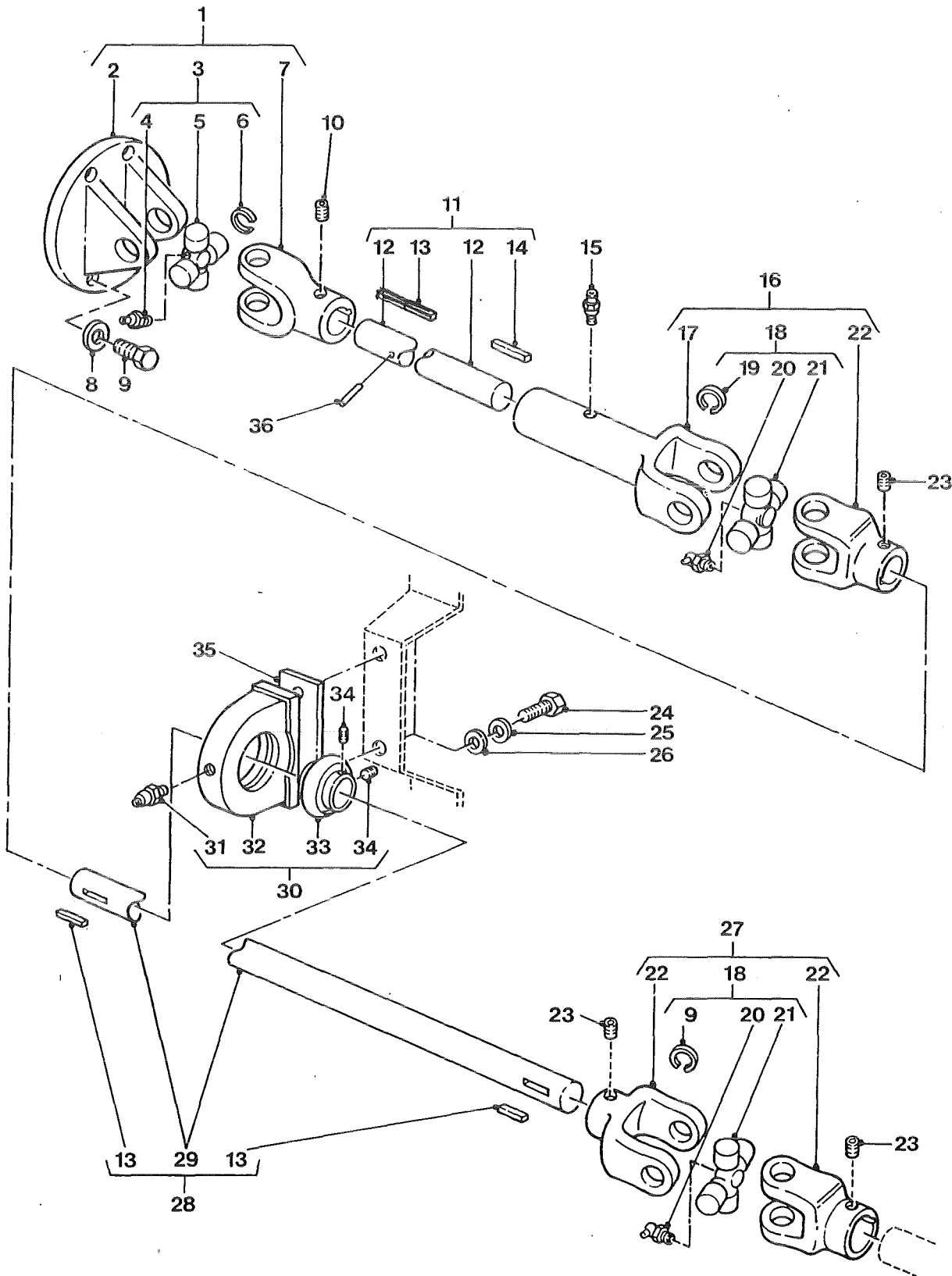


WINCH DRIVE LINE

GROUP UCD
 TITLE WINCH DRIVE LINE

ITEM NO	DESIGNATION	NSN MANUFACTURER CODE/PART NO SUPPLIER CODE/PART NO	NO	U	E	L*
			OFF	O	X	M*
			I	P	P	H*
001	JOINT ASSEMBLY, UNIVERSAL, FLANGED (INCLUDES UCD 002, UCD 003 AND UCD 007)	Z5394/BYG8001 Z5394/BYG8001	1			
002	FLANGE, UNIVERSAL JOINT, FRIGHT STEEL, 24 MM DIA 'U' JOINT HOLES, 87 MM OD, 4 BY 8 MM DIA SCREW HOLES, BLACK (ALSO PART OF UCD 001)	Z3823/1-2-39 Z5394/HYL8761	1			
003	SPIDER, UNIVERSAL JOINT, VEHICULAR (INCLUDES UCD 004 TO UCD 006, ALSO PART OF UCD 001)	2520 66-075-2386 Z0025/K5A64 Z5394/HYM469	1	EA	X	LMH
004	FITTING, LUBRICATION STRAIGHT (ALSO PART OF UCD 003)	4730 66-128-5071 Z4769/109/6 Z4769/109/6	1	EA	X	LMH
005	JOINT, UNIVERSAL, 24 MM DIA CAPS (USE UCD 003)	/NIL /NIL	1			
006	CIRCLIP, INTERNAL EXPANDING, 25 MM DIA, 1.6 MM THK, SPRING STEEL, BLACK (ALSO PART OF UCD 003)	U1030/CR110245 U1030/CR110245	4			
007	YOKE, UNIVERSAL JOINT ASSEMBLY, 22 MM ID, 60 MM LG, 24 MM DIA 'U' JOINT HOLES (ALSO PART OF UCD 001)	K3823/K1-4-A6533 Z5394/HYL8893	1			
008	WASHER, LOCK SPRING, STEEL, SINGLE TURN, SQUARE SECTION, ZINC PLATED, 8 MM BOLT SIZE	5310 99-138-9227 U1030/WL108001L Z5394/WM108001L	4	EA	X	LMH
009	SCREW, FLANGE METRIC, STEEL, ZINC PLATED, M8 BY 25 MM LG	2520 99-277-6018 U1030/FS108251 Z5394/FS108251	4	EA	X	LMH
010	SCREW, CAP, SOCKET HD, 1/2 IN LG, 3/8 IN UNC, 0.187 IN HEX DRIVE, CONE POINT	5305 66-128-6104 Z5394/MYH3571 Z5394/MYH3571	1	EA	X	LMH
011	SHAFT ASSEMBLY, WINCH DRIVE, REAR (INCLUDES UCD 012 TO UCD 014, ALSO PART OF UCD 901)	Z5394/AYG8190 Z5394/AYG8190	1			

* GRADE OF REPAIR (LIGHT, MEDIUM OR HEAVY)



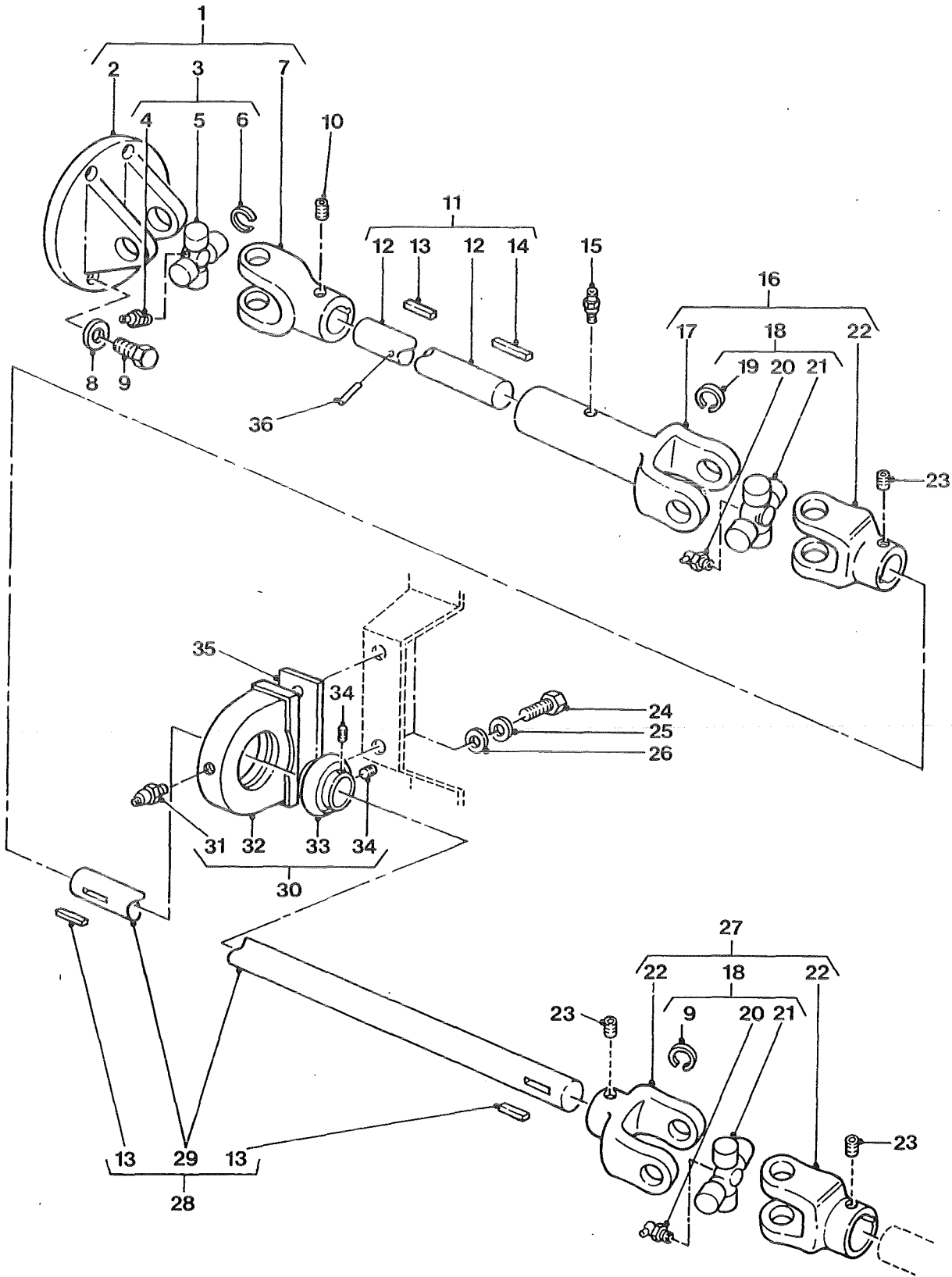
WINCH DRIVE LINE

GROUP UCD
 TITLE WINCH DRIVE LINE

ITEM NO	DESIGNATION	NSN MANUFACTURER CODE/PART NO SUPPLIER CODE/PART NO	NO	U	E	L*
			OFF	O	X	M*
			I	P	H	
012	SHAFT, WINCH DRIVE, REAR, 670 MM LG, 22 MM DIA, STEEL, ZINC PLATED (USE UCD 011)	/NIL /NIL	1			
013	KEY, MACHINE, STEEL, ZINC PLATED, 4.7 MM BY 4.7 MM BY 76.0 MM LG (ALSO PART OF UCD 011 AND UCD 028)	Z4820/8786 Z5394/HYL8786	3			LMH
014	KEY, MACHINE STEEL, ZINC PLATED, 6.4 MM BY 6.4 MM BY 26.0 MM LG (ALSO PART OF UCD 011)	5315 66-128-5841 Z4820/T2893 Z5394/HYL8862	1	EA	X	LMH
015	FITTING, LUBRICATION STRAIGHT, 3/8 IN UNC THD (ALSO PART OF UCD 901)	4730 66-128-5069 Z4820/T218 Z5394/HYL8788	1	EA	X	LMH
016	JOINT ASSEMBLY, UNIVERSAL, SLIDING, 210 MM O/A LG (INCLUDES UCD 017, UCD 018 AND UCD 022, ALSO PART OF UCD 901)	Z5394/AYG8587 Z5394/AYG8587	1			
017	YOKE, SLIDING, 140 MM LG, 22 MM ID, 24 MM DIA 'U' JOINT HOLES (ALSO PART OF UCD 016)	Z4820/T1436 Z5394/HYL8861	1			
018	PARTS KIT, UNIVERSAL JOINT PERENTIE WINCHDRIVE SHAFT (INCLUDES UCD 019 TO UCD 021, ALSO PART OF UCD 016 AND UCD 027)	2520 66-128-5053 Z4820/T1429 Z5394/HYL8764	2	EA	X	LMH
019	CIRCLIP, EXTERNAL CONTRACTING, 25 MM ID, 2 MM THK, STEELMCOPPER PLATED (ALSO PART OF UCD 018)	U1030/CR120255 U1030/CR120255	8			
020	FITTING, LUBRICATION 45 DEG, 1/8 IN NPT, 27 TPI (ALSO PART OF UCD 018)	4730 66-128-5070 U1030/LN050031 Z5394/HYL8767	2	EA	X	LMH
021	JOINT, UNIVERSAL (USE UCD 018)	/NIL /NIL	2			
022	YOKE, SHORT, 22 MM ID, 60 MM LG, 24 MM DIA 'U' JOUNT HOLES (ALSO PART OF UCD 016 AND UCD 027)	Z4820/T1435 Z5394/HYL8860	3			

ISSUE NO: 3 REPAIR PARTS SCALE: 02186 PAGE NO: 40

* GRADE OF REPAIR (LIGHT, MEDIUM OR HEAVY)

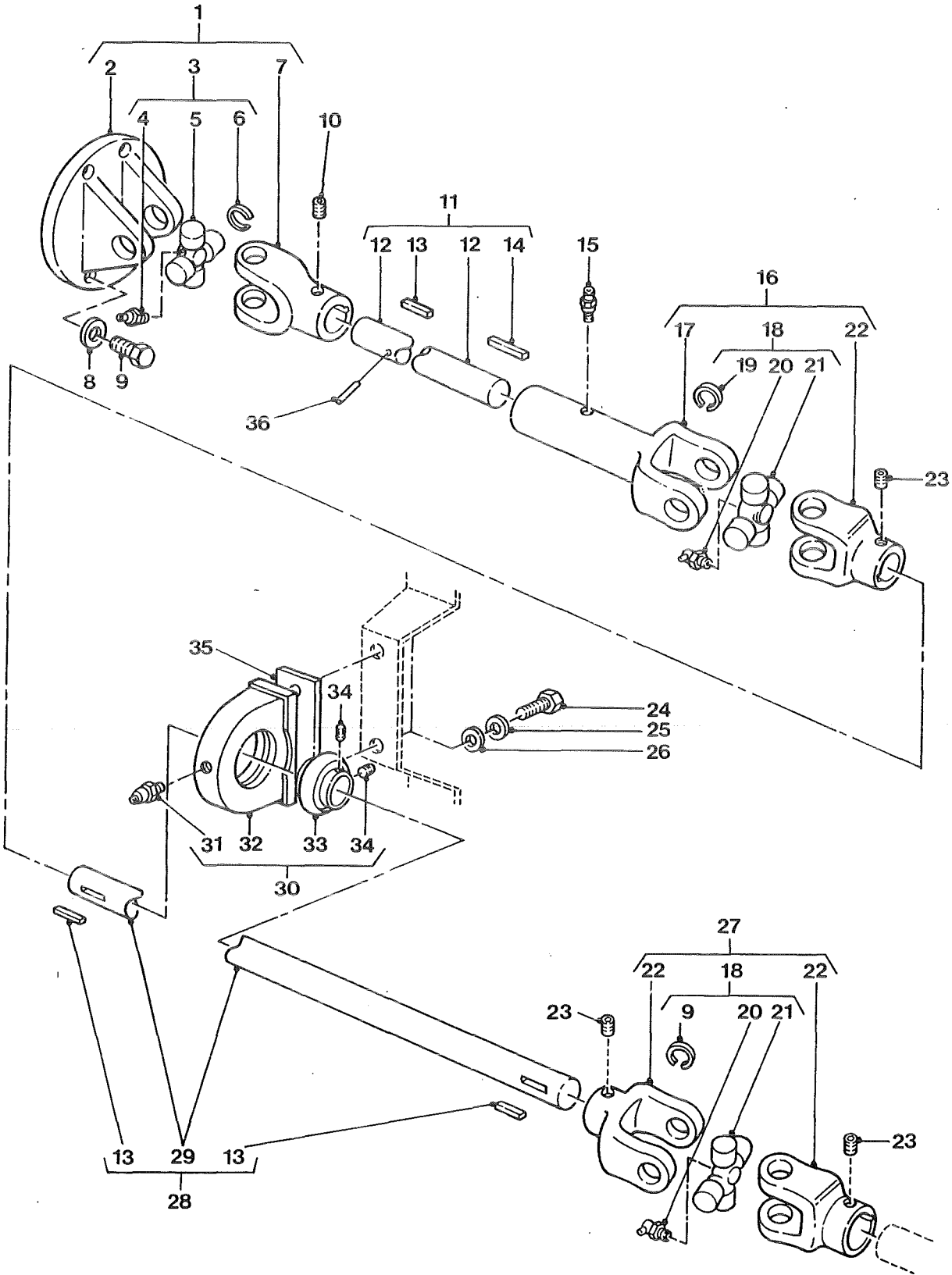


WINCH DRIVE LINE

GROUP UCD
 TITLE WINCH DRIVE LINE

ITEM NO	DESIGNATION	NSN MANUFACTURER CODE/PART NO SUPPLIER CODE/PART NO	NO OFF	U O	E X	L* M* H*
023	SETSCREW, STEEL, UNC, 3/8 IN BY 1/2 IN LG, HEX DRIVE, CUP POINT (ALSO PART OF UCD 901)	5305 66-128-5115 Z4820/T2825 Z5394/HYL8790	3	EA	X	LMH
024	BOLT, MACHINE O METRIC, 6G, STEEL, HEXHD, ZINC PLATED, 10 MM DIA, 1.50 MM PITCH, 20 MM LG	5306 99-122-4909 U1030/SH110201 Z5394/SH110201	2	EA	X	LMH
025	WASHER, LOCK SPRING, STEEL, SINGLE TURN, ZINC PLATED, 10 MM, 15.90 MM OD 2.50 MM THK	5310 99-138-9228 U1030/WL110001L Z5394/WL110001L	2	EA	X	LMH
026	WASHER, FLAT 10.5 MM ID, 21 MM OD, 2 MM THK, RD, STEEL, ZINC PLATED	5310 99-122-6476 U1030/WA110061 Z5394/WA110061	2	EA	X	LMH
027	JOINT ASSEMBLY, UNIVERSAL, 130 MM O/A LG (INCLUDES UCD 018 AND UCD 022)	Z5394/AYG8586 Z5394/AYG8586	1			
028	SHAFT ASSEMBLY, WINCH DRIVE, FRONT. (INCLUDES UCD 013 AND UCD 029, ALSO PART OF UCD 901)	Z4820/T2891 Z5394/AYG8145	1			
029	SHAFT, WINCH DRIVE, FRONT, 660 MM LG, 22 MM DIA, STEEL, ZINC PLATED (USE UCD 028)	/NIL /NIL	1			
030	BEARING ASSEMBLY, PLUMMER BLOCK, FRONT SHAFT (INCLUDES UCD 031 TO UCD 034)	Z5394/HYG2492 Z5394/HYG2492	1			
031	FITTING, LUBRICATION, PLUMMER BLOCK BEARING, BRASS, 6 MM PARALLEL THD, STRAIGHT (USE UCD 030)	/NIL /NIL	1			
032	BLOCK, PLUMMER, BEARING, CAST IRON, 45 MM WIDTH, 55 MM BETWEEN SCREW HOLE CENTRES. (ALSO PART OF UCD 030)	ZC391/PA205J ZC391/PA205J	1			

* GRADE OF REPAIR (LIGHT, MEDIUM OR HEAVY)



WINCH DRIVE LINE

GROUP UCD
 TITLE WINCH DRIVE LINE

ITEM NO	DESIGNATION	NSN MANUFACTURER CODE/PART NO SUPPLIER CODE/PART NO	NO	I	E	L*
			OFF	O	X	M*
			I	P	H	H*
033	BEARING UNIT, BALL 22 MM ID, 50 MM OD, 34 MM W, SELF ALIGNING (ALSO PART OF UCD 030)	3130 66-128-5843 S5250/UCUP205-14 Z5394/HYL8892	1	EA	X	LMH
034	SETSCREW STEEL, METRIC, 5 MM BY 7 MM LG, HEX DRIVE, DOME POINT (ALSO PART OF UCD 030)	5305 66-128-5116 ZR910/01955507 Z5394/HYL8794	2	EA	X	LMH
901	KIT, WINCH DRIVE LINE. (INCLUDES UCD 011, UCD 015, UCD 016, UCD 023, UCD 027 AND UCD 028)	Z5394/AYG8191 Z5394/AYG8191	1			
035	PLATE, SPACER, PLUMMER BLOCK TO CHASSIS, 80 MM LG, 40 MM W, 2 BY 12 MM DIA HOLES, 55 MM BETWEEN HOLE CENTRES, 3 MM THK, STEEL	Z5394/HYG4046 Z5394/HYG4046	1			
036	PIN, SPRING STEEL, 6.35 MM DIA, BY 30 MM LG	5315 66-144-6270 Z5394/PA112301 Z5394/PA112301	1	EA	X	LMH

* GRADE OF REPAIR (LIGHT, MEDIUM OR HEAVY)